

SAFE FILES + SUPERIOR FILLS



**SybronEndo** | *Safe files, superior fills.*

A DIVISION OF SYBRON DENTAL SPECIALTIES

1717 West Collins Avenue, Orange, CA 92867  
Tel 800.346.ENDO Tel 714.516.7979 Fax 714.516.7936

SybronEndo Europe, Basicweg 20, 3821 BR Amersfoort, The Netherlands  
Tel +31 33 453 61 59 Fax +31 33 453 61 53 endo@sybronendo.com

SybronEndo Australia, Unit 10/112-118 Talavera Road, North Ryde NSW 2113.  
Tel 1800 052 030 Fax 02 8875 8175 SybronEndoAustralia@sybrondental.com

Visit us online at [SybronEndo.com](http://SybronEndo.com)

**SybronEndo Store**

Fast. Convenient. Easy. Buy our high-quality endodontic products online at [store.sybronendo.com](http://store.sybronendo.com).

SYBRONENDO PRODUCTS

Dear Clinician,

Our purpose as an organization is to assist the clinician in the preservation of natural dentition and the elimination of patient pain. How do we do that? By providing you with the safest files and superior filling methods.

When clinicians talk, SybronEndo listens. Our doctors requested a rotary Niti file that separated less than the competition, cut better and was more flexible. After several years of research and development our engineers created a file that delivers everything our customers asked for. Twisted Files (TF) are strong enough to cut ideal file paths confidently, yet flexible enough to do it efficiently. TF launched last year and is the most significant endodontic innovation in many years. It continues to break all sales records for new product introductions in our company's storied history. Now in this version of our catalog we are introducing TF in larger tip sizes to enhance the shaping of apical anatomy. To learn more visit [TFwithRPhase.com](http://TFwithRPhase.com).

On August 1, 2008 Pentron Inc. joined the Sybron Dental Specialties family. The crown jewel of Pentron is Resilon, a synthetic alternative to gutta percha which has demonstrated through clinical review and scientific investigation to be superior to gutta percha. So whether you buy RealSeal or Epiphany brands you have a single source for this innovative obturation material.

SybronEndo recently launched RealSeal 1 Bonded Obturators (RS1), made with Resilon technology which is the next generation in carrier-based filling for the root canal. All the components of RS1 — sealer, filler and core — are resin-based materials and bond with each other to form a superior seal inside the patient's tooth. This seal is important for the patient because it keeps bacteria from re-infecting the tooth and enabling results that can potentially last a lifetime. Clinicians like RS1 because it is easy to use and increases the likelihood of patient satisfaction by reducing the chances of a failed root canal. Endodontic specialists like it because it is easier to retreat than competitive products and the dual radiopacity enables them to see the core/material interface on their diagnostic radiograph. Go to [SuperiorFills.com](http://SuperiorFills.com) for additional information on RS1. This is an exciting time to be involved in endodontics. Let us assure you we are already working on the next generation of endodontic technology to keep your practice on the cutting edge. Look for those advancements in the next edition of the best catalog in Endodontics.

We thank you for your ongoing support.

Sincerely,



Shawn Potter, Vice President of Marketing  
SybronEndo



2	DIAGNOSTICS
8	SHAPE
28	CLEAN
32	OBTURATION
54	ULTRASONICS
62	MICROSURGERY
72	RETREAT & RESTORE
76	INDEX

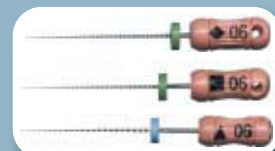
NEW PRODUCTS FROM SYBRONENDO



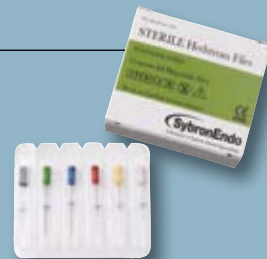
LARGER TF APICAL SIZES / PG. 10



NEW M4 SAFETY HANDPIECE / PG. 21



06 STAINLESS STEEL FILES / PG. 24



STERILE FILES / PG. 27



REALSEAL 1 BONDED OBTURATION / PG. 34



EPIPHANY / PG. 43



IMPROVED BUCHANAN HAND PLUGGERS / PG. 46



REDSTAR ULTRASONIC TIPS / PG. 57



The first step to a successful root canal preparation is to find out as much information about the tooth as possible. The SybronEndo Diagnostic line is second to none in this arena. Anchored by our innovative Elements Apex Locator, our diagnostic equipment provides the standard by which all others are measured.

## DIAGNOSTICS

# DIAGNOSTICS

ELEMENTS DIAGNOSTIC UNIT	4
MINI APEX LOCATOR	6
EXPLORERS	7
VITALITY SCANNER	7



# The future of endodontics is here



## ELEMENTS™ DIAGNOSTIC UNIT AND APEX LOCATOR

When you're doing a root canal, you need to get to the point – the apex – predictably, efficiently and accurately. This technology optimizes earlier engineering to give you the most precise reading available today. What's more, the satellite display, which you can place on the instrument tray, the microscope, the patient's bib or anywhere else you choose, brings critical data into your field of vision.



<b>A</b> File Clip	973-0310
<b>B</b> Bifurcated Probe	973-0307
<b>C</b> Crown Test Tip (Diagnostic Unit only)	973-0309
<b>D</b> Vitality Probe (Diagnostic Unit only)	973-0308
<b>E</b> Lip Hook (pkg of 5)	973-0313
<b>F</b> Elements Patient Lead Cord (for use with Satellite)	973-0311
<b>G</b> Satellite with Satellite Cord	973-0303
<b>H</b> Elements Diagnostic Unit	973-0300
<b>H</b> Diagnostic Unit (without Satellite)	973-0320
<b>I</b> Elements Apex Locator	973-0301
<b>I</b> Apex Locator (without Satellite)	973-0321
Elements Patient Lead Cord (without Satellite) <i>Not Pictured</i>	973-0304
<b>Charge Adapter</b>	973-0302
<b>Battery Pack</b>	973-0305

## FEATURES AND BENEFITS

- Auto-power off conserves battery life
- Full-range audio speakers eliminate annoying beeps
- Nonglare tilt screen with digital and graphical feedback
- Autoclavable medical-grade cords and connectors
- Probes are gold plated to resist micro-corrosion
- Automatic calibration for a more accurate diagnosis
- Advanced battery technology for longest life between charges
- Vitality Scanner provides pain-free electric pulp testing and accurate analysis in the presence of EDTA, sodium hypochlorite, blood, saline, water and hydrogen peroxide





**MINI APEX LOCATOR** 973-0280

**MINI APEX LOCATOR**

SybronEndo's Mini Apex Locator delivers the power of apex location in the palm of your hand and offers a new level of accuracy at an affordable price.

Mini Apex Locator	973-0280
Lead Wire (autoclavable) (pkg of 2)	973-0281
File Clip (autoclavable) (pkg of 3)	973-0283
Lip Hook (autoclavable) (pkg of 5)	973-0282
Disposable Sleeves (pkg of 16)	973-0284
Mini Probe (2mm pin) (pkg of 2)	973-0120
Long Probe (2mm pin) (pkg of 2)	973-0121

**FEATURES AND BENEFITS**

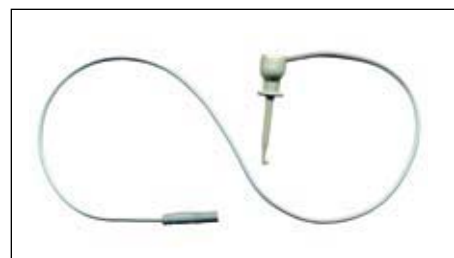
- Digital signal processing
- Compact size
- Great technology and value
- New levels of accuracy
- No counter space required
- A powerful apex locator at an affordable price



**Disposable Sleeves** 973-0284



**Lead Wire** 973-0281



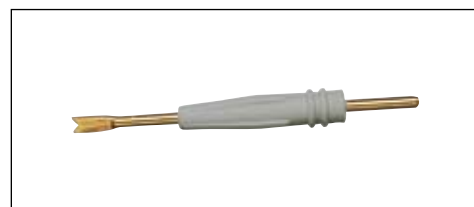
**File Clip** 973-0283



**Lip Hook** 973-0282



**Long Probe** 973-0121



**Mini Probe** 973-0120

**ENDO EXPLORERS**

The extremely sharp and durable Carr Explorer is used to create an initial tracking groove by hand.

**CX-1 Carr Explorer** 974-0040

The Endo Explorer is our classic explorer used to locate canals.

**DG-16 Endo Explorer** 974-0041



**CX-1 Carr Explorer** 974-0040

**DG-16 Endo Explorer** 974-0041

**VITALITY SCANNER™ 2006**

The Vitality Scanner 2006 ensures dependable and pain-free pulp testing. This outstanding diagnostic tool is automatically controlled and features large digital readouts. It's the quick and easy solution for patient- and practice-friendly pulp testing.

Vitality Scanner 2006	973-0234
Short Probe Tip	973-0232
Long Probe Tip	973-0233
Mini-Tip Kit	973-0231
Lip Clip (pkg of 5)	973-0227
Grounding Lead with Lip Clip	973-0226

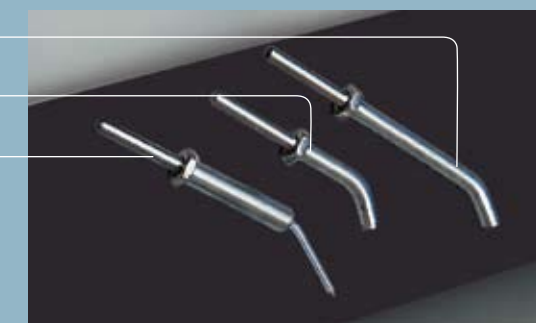
**Vitality Scanner 2006** 973-0234



**LONG TIP** 973-0233

**SHORT TIP** 973-0232

**MINI TIP** 973-0231



**GROUNDING LEAD WITH LIP CLIP** 973-0226



Use with Vitality Scanner 2006

The art and science of rotary nickel titanium endodontic canal preparation has taken a quantum leap forward with the introduction of the Twisted File, known as TF.

S H A P E

# SHAPE

<b>NEW</b>	TF — TWISTED FILES	10
	K3 NICKEL-TITANIUM FILES	12
	MASTERING ENDODONTIC INSTRUMENTATION / MCSPADDEN	14
	K3 WORKSTATION	15
	QUANTEC NICKEL-TITANIUM FILES	16
	LA AXCESS BURS AND INSTRUMENTS	18
	ENDORING	19
	ENDO-BENDER	19
	SLICKGEL ES	19
	ENDOTOUCH TC	20
	HANDPIECES	20
	ELECTRIC ENDODONTIC MOTOR	21
	M4 SAFETY HANDPIECE	21
	HANDFILES	24
	BARBED BROACHES	26
	GATES GLIDDEN	27
<b>NEW</b>	STERILE FILES	27



SEE OUR NEW TF APICAL SIZES ▷ PAGE 10.



= UNSURPASSED SAFETY + EXTRAORDINARY EFFICIENCY



### A NEW PARADIGM IN CANAL SHAPING

The Twisted File is the endodontic equivalent of man stepping on the moon. Yes, it is breakthrough technology. But more than that, it presents a new paradigm in canal enlargement.

— Richard Mounce, DDS, Vancouver, Washington

### A QUANTUM LEAP IN FILE DESIGN AND MANUFACTURING

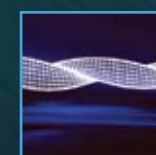
The Twisted File is the first and only file to combine three unique and proprietary processes to deliver optimal strength and flexibility:

#### R-PHASE HEAT TREATMENT TECHNOLOGY



This proprietary technology is used to optimize the molecular phase and properties of nickel titanium (NiTi). The resulting crystalline structure modification, which has been shown to be finer than traditionally-processed materials<sup>1</sup> maximizes flexibility and resistance to breakage.

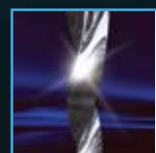
#### TWISTED DESIGN, NOT GROUND



Twisting optimizes grain structure and eliminates formation of microfractures, making the file even more durable. Other endodontic files are made by grinding flutes into the file.

Grinding weakens the metal's structure at the molecular level and creates microfractures on the metal's surface – both of which can lead to file separation.

#### ADVANCED SURFACE TREATMENT

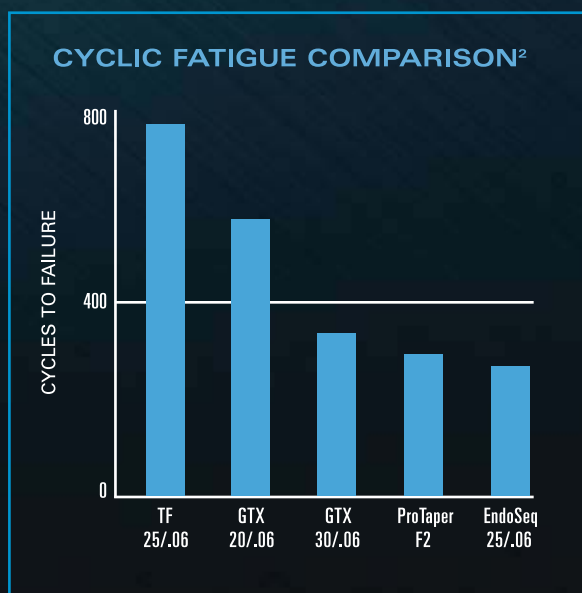


The Twisted File's special surface conditioning treatment finishes the file surface while respecting the integrity of the underlying grain structure. This maintains the hardness of the file and sharpness of the cutting edges.

### STRENGTH AND FLEXIBILITY THAT CAN BE MEASURED

In a study of cyclic fatigue, the Twisted File performed 2-3 times better than other NiTi rotary files on the market.<sup>2</sup>

- ◆ In a torsional stress comparison, the Twisted File was shown to absorb by far the greatest amount of energy before fracture. In fact, it can withstand about 60% more torque than files made using a traditional manufacturing process.<sup>1</sup>
- ◆ The Twisted File is up to 70% more flexible than other rotary NiTi files.<sup>2</sup>



### AS SIMPLE AS 1-2-3

Twisted Files come in packs of three. That's not an arbitrary number. They simply work more efficiently and last longer. The Twisted File:

- ◆ Significantly lowers the number of files used per endo case
- ◆ Improves clinical efficiency in completing endo cases
- ◆ Reduces chair time for patients
- ◆ Greatly lowers the level and cost of file inventory



TF APICAL SIZES COME WITH NEW BLUE LABELS FOR EASY IDENTIFICATION

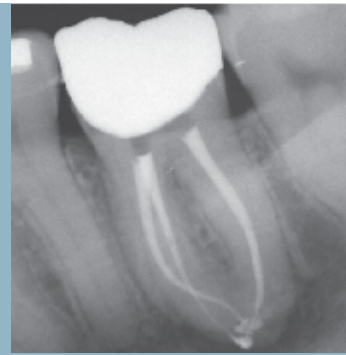


TF	TF SMALL ASSORTED	TF LARGE ASSORTED	TF SMALL APICAL ASSORTED																																																																																																				
<table border="1"> <thead> <tr> <th>Taper</th> <th>Tip</th> <th>23mm</th> <th>27mm</th> </tr> </thead> <tbody> <tr><td>.12</td><td>25</td><td>822-2253</td><td></td></tr> <tr><td>.10</td><td>25</td><td>822-0253</td><td>822-0257</td></tr> <tr><td>.08</td><td>25</td><td>822-8253</td><td>822-8257</td></tr> <tr><td>.06</td><td>35</td><td>822-6353</td><td>822-6357</td></tr> <tr><td>.06</td><td>30</td><td>822-6303</td><td>822-6307</td></tr> <tr><td>.06</td><td>25</td><td>822-6253</td><td>822-6257</td></tr> <tr><td>.04</td><td>50</td><td>822-4503</td><td>822-4507</td></tr> <tr><td>.04</td><td>40</td><td>822-4403</td><td>822-4407</td></tr> <tr><td>.04</td><td>25</td><td>822-4253</td><td>822-4257</td></tr> </tbody> </table>	Taper	Tip	23mm	27mm	.12	25	822-2253		.10	25	822-0253	822-0257	.08	25	822-8253	822-8257	.06	35	822-6353	822-6357	.06	30	822-6303	822-6307	.06	25	822-6253	822-6257	.04	50	822-4503	822-4507	.04	40	822-4403	822-4407	.04	25	822-4253	822-4257	<table border="1"> <thead> <tr> <th colspan="2">822-4683 23mm</th> </tr> <tr> <th>Taper</th> <th>Tip</th> </tr> </thead> <tbody> <tr><td>.08</td><td>25</td></tr> <tr><td>.06</td><td>25</td></tr> <tr><td>.04</td><td>25</td></tr> </tbody> </table> <table border="1"> <thead> <tr> <th colspan="2">822-4687 27mm</th> </tr> <tr> <th>Taper</th> <th>Tip</th> </tr> </thead> <tbody> <tr><td>.08</td><td>25</td></tr> <tr><td>.06</td><td>25</td></tr> <tr><td>.04</td><td>25</td></tr> </tbody> </table>	822-4683 23mm		Taper	Tip	.08	25	.06	25	.04	25	822-4687 27mm		Taper	Tip	.08	25	.06	25	.04	25	<table border="1"> <thead> <tr> <th colspan="2">822-6803 23mm</th> </tr> <tr> <th>Taper</th> <th>Tip</th> </tr> </thead> <tbody> <tr><td>.10</td><td>25</td></tr> <tr><td>.08</td><td>25</td></tr> <tr><td>.06</td><td>25</td></tr> </tbody> </table> <table border="1"> <thead> <tr> <th colspan="2">822-6807 27mm</th> </tr> <tr> <th>Taper</th> <th>Tip</th> </tr> </thead> <tbody> <tr><td>.10</td><td>25</td></tr> <tr><td>.08</td><td>25</td></tr> <tr><td>.06</td><td>25</td></tr> </tbody> </table>	822-6803 23mm		Taper	Tip	.10	25	.08	25	.06	25	822-6807 27mm		Taper	Tip	.10	25	.08	25	.06	25	<table border="1"> <thead> <tr> <th colspan="2">822-8663 23mm</th> </tr> <tr> <th>Taper</th> <th>Tip</th> </tr> </thead> <tbody> <tr><td>.08</td><td>25</td></tr> <tr><td>.06</td><td>30</td></tr> <tr><td>.06</td><td>35</td></tr> </tbody> </table> <table border="1"> <thead> <tr> <th colspan="2">822-6643 23mm</th> </tr> <tr> <th>Taper</th> <th>Tip</th> </tr> </thead> <tbody> <tr><td>.06</td><td>30</td></tr> <tr><td>.06</td><td>35</td></tr> <tr><td>.04</td><td>40</td></tr> </tbody> </table>	822-8663 23mm		Taper	Tip	.08	25	.06	30	.06	35	822-6643 23mm		Taper	Tip	.06	30	.06	35	.04	40
Taper	Tip	23mm	27mm																																																																																																				
.12	25	822-2253																																																																																																					
.10	25	822-0253	822-0257																																																																																																				
.08	25	822-8253	822-8257																																																																																																				
.06	35	822-6353	822-6357																																																																																																				
.06	30	822-6303	822-6307																																																																																																				
.06	25	822-6253	822-6257																																																																																																				
.04	50	822-4503	822-4507																																																																																																				
.04	40	822-4403	822-4407																																																																																																				
.04	25	822-4253	822-4257																																																																																																				
822-4683 23mm																																																																																																							
Taper	Tip																																																																																																						
.08	25																																																																																																						
.06	25																																																																																																						
.04	25																																																																																																						
822-4687 27mm																																																																																																							
Taper	Tip																																																																																																						
.08	25																																																																																																						
.06	25																																																																																																						
.04	25																																																																																																						
822-6803 23mm																																																																																																							
Taper	Tip																																																																																																						
.10	25																																																																																																						
.08	25																																																																																																						
.06	25																																																																																																						
822-6807 27mm																																																																																																							
Taper	Tip																																																																																																						
.10	25																																																																																																						
.08	25																																																																																																						
.06	25																																																																																																						
822-8663 23mm																																																																																																							
Taper	Tip																																																																																																						
.08	25																																																																																																						
.06	30																																																																																																						
.06	35																																																																																																						
822-6643 23mm																																																																																																							
Taper	Tip																																																																																																						
.06	30																																																																																																						
.06	35																																																																																																						
.04	40																																																																																																						

1. Nicoll T, Oestreich L, Tang C, Ravi VA. Evaluation of product properties resulting from a new NiTi endodontic file manufacturing process. Chemical and Materials Engineering Department, California State Polytechnic University, 2006.  
2. Data on file, Sybron Dental Specialties, Inc. Data from Gambarini G. Cyclic fatigue test and flexibility test.

**K3™ is a third-generation, triple-fluted, asymmetric endodontic file system. Designed to cut quickly, efficiently and safely, with unparalleled debris removal, the K3 addresses technical and procedural issues that no other ground-fluted instrument does.**

*K<sup>3</sup> = √ENDO™*

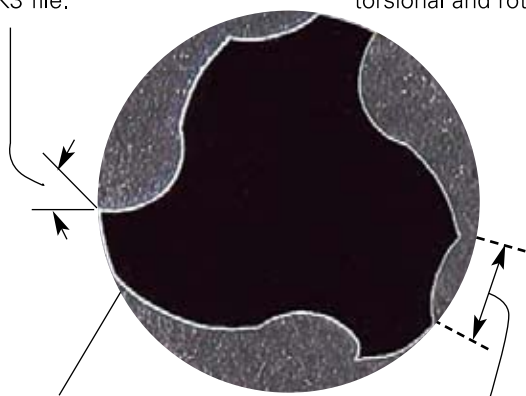


RADIOGRAPH COURTESY OF DR. RICHARD MOUNCE

**ENGINEERED FOR EFFICIENCY**

Positive rake angle provides the active cutting action of the K3 file.

Reduced radial land with wide blade support adds peripheral strength to resist torsional and rotary stresses.

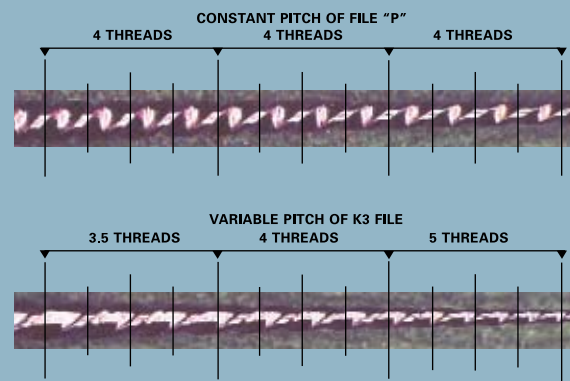


The third radial land stabilizes and keeps the instrument centered in the canal and minimizes "over-engagement."

Radial land relief reduces friction on the canal wall.

**VARIABLE PITCH**

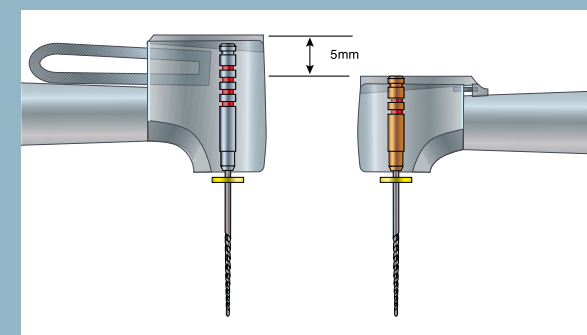
Many files maintain a constant pitch (distance between cutting edges) through the length of the file. This may cause a "screw-in" effect whereby each successive flute naturally follows the path created by the one before. **The K3 file has a varied pitch that allows debris to effectively channel coronally.** This is important not only during initial cleaning and shaping but also for retreatment.



**K3 files are more efficient than some other file systems at removing gutta percha in the apical third.** (Ref 2)

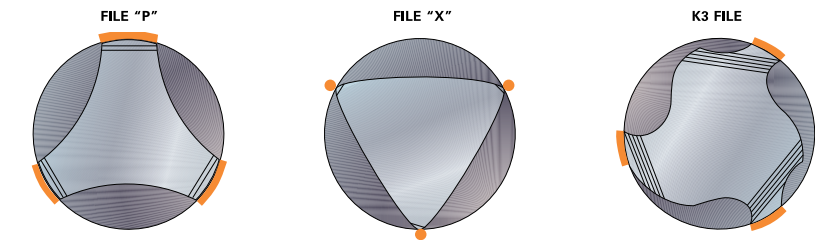
**LESS FRICTION, MORE SUPPORT**

With the recessed trailing edge of the radial land, K3 files minimize frictional resistance. Other nickel-titanium systems have wide radial lands that cause friction and can lead to breakage. K3 files have added mass behind the cutting surface to provide support and maintain integrity. With other systems, blade rollover or cracks can occur during instrumentation.



**AXXESS**

Our Axxess line was designed for those difficult, hard-to-reach cases. Shorter file handles, when used in conjunction with our Axxess handpiece, result in an overall height reduction of approximately 5mm.



*The K3 system allows the practitioner to internally sculpt the root canal wall to a glassy smooth finish with safety, predictability and efficiency. Because of the wide selection of tapers and sizes available, if you're a beginner they're great, and if you're an expert, there is nothing you can't do with them!*

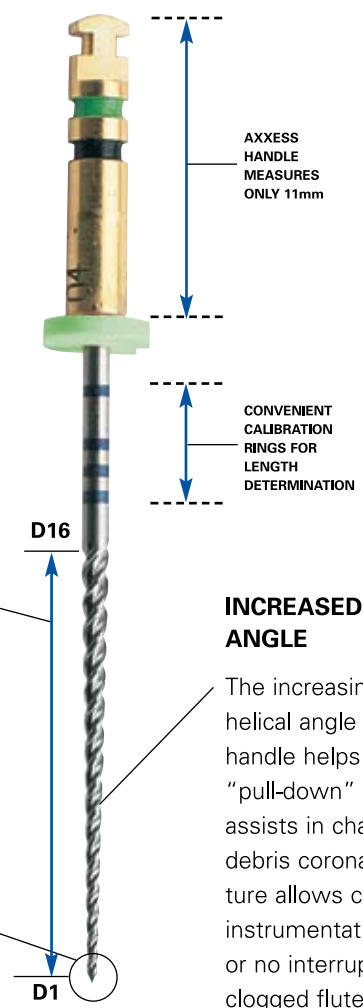
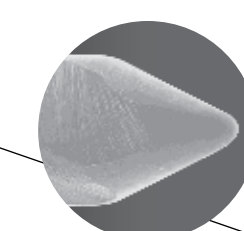
*– Gary Glassman, DDS, FRCD(C), Toronto, Canada*

**VARIABLE CORE DIAMETER**

The relationship between the core diameter and the outer diameter varies from D1 to D16 in order to maintain flexibility along the entire working length.

**SAFE-ENDED TIP**

Assists in following the canal shape while minimizing apical transportation.

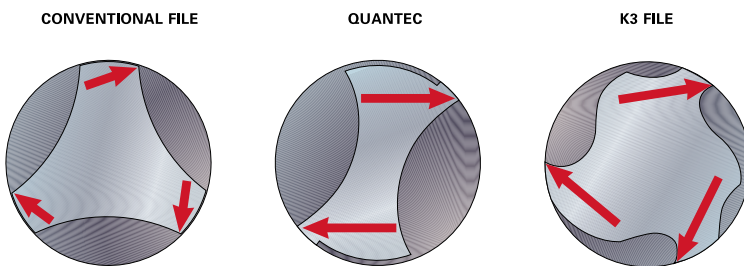


**INCREASED HELICAL ANGLE**

The increasing variable helical angle from tip to handle helps reduce the "pull-down" effect and assists in channeling debris coronally. This feature allows continuous instrumentation with little or no interruption from clogged flutes.

**BLADE SUPPORT**

Blade rollover or cracks can occur during instrumentation. SybronEndo has added structure behind the K3 and Quantec File edge. This is the most effective means of preventing the aforementioned problems.







**K3™ NICKEL-TITANIUM FILES (PKG OF 6)**

Taper	Tip	17mm	21mm	25mm
.12	25	830-2257	830-2251	830-2255
.10	25	830-0257	830-0251	830-0255
.08	25	830-8257	830-8251	830-8255

Taper	Tip	21mm	25mm	30mm
.06	60	825-6601	825-6605	825-6600
.06	55	825-6551	825-6555	825-6550
.06	50	825-6501	825-6505	825-6500
.06	45	825-6451	825-6455	825-6450
.06	15-40 Assorted	825-6021	825-6025	
.06	40	825-6401	825-6405	825-6400
.06	35	825-6351	825-6355	825-6350
.06	30	825-6301	825-6305	825-6300
.06	25	825-6251	825-6255	825-6250
.06	20	825-6201	825-6205	825-6200
.06	15	825-6151	825-6155	825-6150

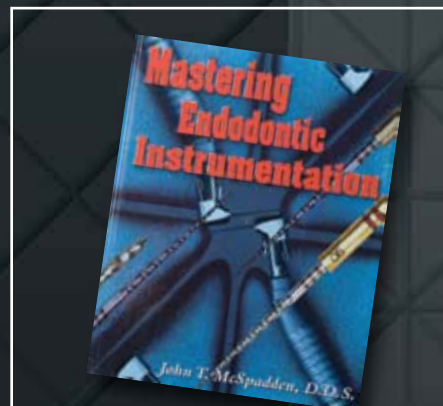
.04	60	825-4601	825-4605	825-4600
.04	55	825-4551	825-4555	825-4550
.04	50	825-4501	825-4505	825-4500
.04	45	825-4451	825-4455	825-4450
.04	15-40 Assorted	825-4021	825-4025	
.04	40	825-4401	825-4405	825-4400
.04	35	825-4351	825-4355	825-4350
.04	30	825-4301	825-4305	825-4300
.04	25	825-4251	825-4255	825-4250
.04	20	825-4201	825-4205	825-4200
.04	15	825-4151	825-4155	825-4150

.02	15-40 Assorted	825-2021	825-2025	
.02	45	825-2451	825-2455	825-2450
.02	40	825-2401	825-2405	825-2400
.02	35	825-2351	825-2355	825-2350
.02	30	825-2301	825-2305	825-2300
.02	25	825-2251	825-2255	825-2250
.02	20	825-2201	825-2205	825-2200
.02	15	825-2151	825-2155	825-2150

**K3 INTRO KIT** 825-0046

**K3 GUTTA PERCHA**

Taper	Tip		
.06	Feather Tip	825-0048	
.06	20-40 Assorted	825-0600	
.06	45	825-0645	
.06	40	825-0640	
.06	35	825-0635	
.06	30	825-0630	
.06	25	825-0625	
.06	20	825-0620	
.04	Feather Tip	825-0047	
.04	20-40 Assorted	825-0400	
.04	45	825-0445	
.04	40	825-0440	
.04	35	825-0435	
.04	30	825-0430	
.04	25	825-0425	
.04	20	825-0420	



**MASTERING ENDODONTIC INSTRUMENTATION**

Dr. John T. McSpadden, a prolific inventor and researcher, introduced the first nickel-titanium endodontic files. He has now authored the most comprehensive evidence-based rotary instrumentation text available.

Mastering Endodontic Instrumentation 973-0130

**K3 PROCEDURE PACK INSTRUMENTATION GUIDE**

CASES WILL VARY ACCORDING TO INDIVIDUAL TOOTH ANATOMY.

1. Obtain straight-line access using the LA Axxess kit.
2. Locate the canal orifices and obtain coronal patency using hand files.
3. Begin crown-down by taking a .10 taper K3 Shaper to resistance.
4. Take a .08 taper K3 Shaper to resistance.
5. Estimate apical size.
6. Begin crown-down using a size #40 K3 File.
7. Establish working length with your Elements Diagnostic unit. A radiograph may be taken to assist in determining working length.
8. Complete crown-down preparation with a #35 K3 File, #30 K3 File, and #25 K3 File by taking each instrument to resistance at 300 to 350 rpm in an electric torque-control motor, using each instrument for no longer than 5 to 7 seconds.

**CLINICAL TIPS**

- Establish a glide path with hand files. Confirm patency between all rotary files.
- Irrigate often, alternating between sodium hypochlorite & SmearClear™ (17% EDTA solution along with centrimide and additional proprietary surfactants).
- Use very light pressure. Never force instruments. When the instrument no longer advances apically, proceed to the next file.

The Procedure Pack will work in many cases, but all canals are different and additional sizes of K3 Files may be required. Begin with a K3 File three sizes larger than your estimated apical diameter.

**K3 PROCEDURE PACKS**

830-0621 17mm	830-0625 17mm	830-0421 17mm	830-0425 17mm
TAPER TIP .10 25 .08 25	TAPER TIP .10 25 .08 25	TAPER TIP .10 25 .08 25	TAPER TIP .10 25 .08 25
21mm	25mm	21mm	25mm
TAPER TIP .06 40 .06 35 .06 30 .06 25	TAPER TIP .06 40 .06 35 .06 30 .06 25	TAPER TIP .04 40 .04 35 .04 30 .04 25	TAPER TIP .04 40 .04 35 .04 30 .04 25

The bottom band indicates the ISO tip size and the top band indicates the taper.

**K3 VTVT PACKS**

830-7721 21mm		830-7725 25mm	
TAPER	TIP	TAPER	TIP
.10	25	.10	25
.08	25	.08	25
.06	35	.06	35
.04	30	.04	30
.06	25	.06	25
.04	20	.04	20

**K3 G-PACKS**

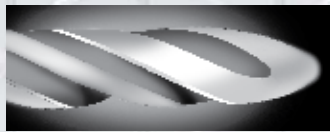
830-9921 17mm		830-9925 17mm	
TAPER	TIP	TAPER	TIP
.12	25	.12	25
21mm	25mm	21mm	25mm
TAPER TIP .10 25 .08 25 .06 25 .04 25 .02 25	TAPER TIP .10 25 .08 25 .06 25 .04 25 .02 25	TAPER TIP .10 25 .08 25 .06 25 .04 25 .02 25	TAPER TIP .10 25 .08 25 .06 25 .04 25 .02 25

**K3 WORKSTATION**

The K3 Workstation provides three rows for files, a holder for gutta purcha points, a ruler for measuring files, a holder for disposable foam, and a Tip Snip gutta purcha cutter. Using a measurement dial, the Tip Snip flush cuts gutta purcha to the apex size you need. An extra row of holes in the back forms a staircase that gives a rapid and perfect file measurement.

**K3 Workstation** 815-9119  
**Foam Insert** 815-9011





**QUANTEC LX (NON-CUTTING) TIP**  
PKG OF 5

**AXXESS HANDLE**

**Engine Graduated Tapers .25mm Tip**

Taper	.03	.04	.05	.06	.08	.10	.12	Assorted
17mm								815-2128 815-2129 815-2131 815-2133
21mm	815-2100	815-2102	815-2104	815-2106	815-2130	815-2132	815-2134	815-1321
25mm	815-2101	815-2103	815-2105	815-2107	815-2135	815-1325		

**Engine ISO (.02 Taper)**

Tip	.15	.20	.25	.30	.35	.40	.45	.50	.55	.60
21mm	815-2108	815-2110	815-2112	815-2114	815-2116	815-2118	815-2120	815-2122	815-2124	815-2126
25mm	815-2109	815-2111	815-2113	815-2115	815-2117	815-2119	815-2121	815-2123	815-2125	815-2127

**STANDARD HANDLE**

**Engine Graduated Tapers .25mm Tip**

Taper	.03	.04	.05	.06
17mm	815-1128			
21mm	815-1100	815-1102	815-1104	815-1106
25mm	815-1101	815-1103	815-1105	815-1107

**Engine ISO (.02 Taper)**

Tip	.15	.20	.25	.30	.35	.40	.45	.50	.55	.60
21mm	815-1108	815-1110	815-1112	815-1114	815-1116	815-1118	815-1120	815-1122	815-1124	815-1126
25mm	815-1109	815-1111	815-1113	815-1115	815-1117	815-1119	815-1121	815-1123	815-1125	815-1127



**QUANTEC SC (CUTTING) TIP**  
PKG OF 5

**AXXESS HANDLE**

**Engine Graduated Tapers .25mm Tip**

Taper	0.03	0.04	0.05	0.06
17mm	815-2028			
21mm	815-2000	815-2002	815-2004	815-2006
25mm	815-2001	815-2003	815-2005	815-2007

**Engine ISO (.02 Taper)**

Tip	0.15	0.20	0.25	0.30	0.35	0.40	0.45	0.50	0.55	0.60
21mm	815-2008	815-2010	815-2012	815-2014	815-2016	815-2018	815-2020	815-2022	815-2024	815-2026
25mm	815-2009	815-2011	815-2013	815-2015	815-2017	815-2019	815-2021	815-2023	815-2025	815-2027

**STANDARD HANDLE**

**Engine Graduated Tapers .25mm Tip**

Taper	0.03	0.04	0.05	0.06
17mm	815-1028			
21mm	815-1000	815-1002	815-1004	815-1006
25mm	815-1001	815-1003	815-1005	815-1007

**Engine ISO (.02 Taper)**

Tip	0.15	0.20	0.25	0.30	0.35	0.40	0.45	0.50	0.55	0.60
21mm	815-1008	815-1010	815-1012	815-1014	815-1016	815-1018	815-1020	815-1022	815-1024	815-1026
25mm	815-1009	815-1011	815-1013	815-1015	815-1017	815-1019	815-1021	815-1023	815-1025	815-1027

*The efficiency I achieve through the use of Quantec SC files is invaluable, allowing me more time to focus on my patient's needs and concerns and less time on the mechanical aspects of cleaning and shaping the case.*

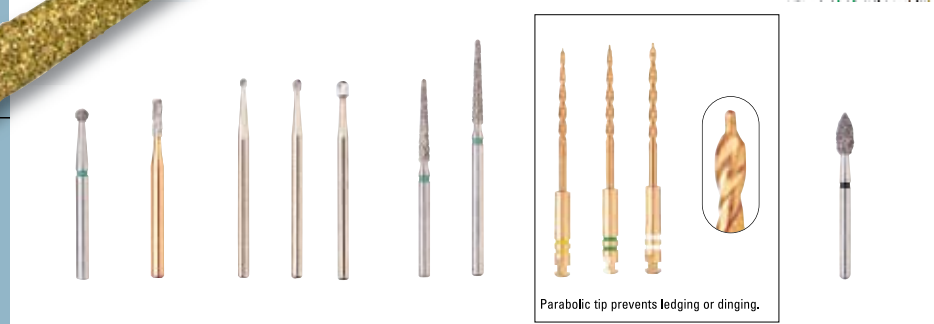
— Dr. Matt Brock

The LA Axxess™ burs, designed in cooperation with Dr. L. Stephen Buchanan, idealize the functional aspects of access preparations by cutting a perfect line-angle extension without any ledges or irregularities. These burs quickly, safely and accurately cut ideal filepaths through coronal tooth structure, dramatically reducing the chances of file separation.

LA Axxess 2.0 Kit 815-1404  
Kit contains two of select burs.



LA Axxess Kit 815-1400  
Kit contains two of each bur.



Parabolic tip prevents ledging or dinging.

**LA Axxess™ DIAMOND BUR**

Designed by Dr. L. Stephen Buchanan, the LA Axxess high-speed diamond bur allows effortless cutting of dentin and enamel and automatically, without any direct visual control, creates perfect line-angle extensions as it meets each orifice. With its rapid high-speed cutting ability and its automated outline form, molar access times can be greatly reduced and outline forms have a more organic shape, which idealizes line-angle extension as well as conservation of tooth structure.

LA Axxess Diamond Bur (pkg of 6) 815-1415

**LA Axxess REFILLS**

- (Shown from left to right)
- #2 Round Diamond (pkg of 5) 815-1418
  - Cross Cut Carbide Bur (pkg of 5) 815-1417
  - #2 Round Carbide Bur (pkg of 5) 815-1412
  - #4 Round Carbide Bur (pkg of 5) 815-1414
  - #6 Round Carbide Bur (pkg of 5) 815-1416
  - Long Tapered Diamond (pkg of 5) 815-1420
  - Extra Long Tapered Diamond (pkg of 5) 815-1421
  - #1 Line Angle Stainless Steel Axxess Instrument (pkg of 6) 815-1401
  - #2 Line Angle Stainless Steel Axxess Instrument (pkg of 6) 815-1402
  - #3 Line Angle Stainless Steel Axxess Instrument (pkg of 6) 815-1403
  - Football Diamond (pkg of 5) 815-1419
  - LA Axxess Bur Clip (Empty) 815-1422



**ENDORING**

A convenient way to hold endodontic instruments and canal lubricant during a procedure, the EndoRing features an easy-to-read ruler with rubber stop port, allowing quick measurements of files up to 30mm (at 1 and .5mm increments) for both right- and left-handed clinicians. The EndoRing and the foam inserts are autoclavable.

EndoRing Kit 825-0049

- Contains:
- 1 – EndoRing Measuring Device (with 3 sizes of rings)
  - 1 – Nondisposable Gel Well
  - 4 – Disposable Gel Wells
  - 3 – Foam Inserts

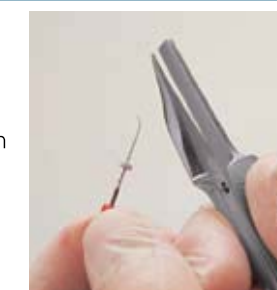
Foam Inserts (48 pieces – 24 blue/24 yellow) 825-0050  
Disposable Gel Wells (24 pieces) 825-0051



**ENDO-BENDER®**

Designed by Dr. L. Stephen Buchanan, SybronEndo's Endo-Bender allows the clinician to accurately bend endodontic products to conform to all canal curvatures. Stainless steel files, posts, pluggers, and spreaders can now be curved and bent with precision and accuracy. The Endo-Bender accomplishes what hemostats, pliers, cotton rolls or fingers never could. Fabricated from surgical stainless steel, the Endo-Bender is built to last, yet will safely bend instruments without kinking or destroying them. The instrument has a numbered gauge for consistency and is autoclavable.

Endo-Bender 976-0100  
Endo-Bender Gauge 976-0101



**SlickGel™ ES**

**SLICKGEL™ ES**

SlickGel™ ES is specially formulated to aid in the negotiation of root canals by endodontic instruments. Each MicroDose® polytube contains EDTA that chelates calcifications in the root canal system. Sodium hypochlorite irrigants react with SlickGel ES's urea peroxide to produce vigorous bubbling action that helps flush debris from the root canal system.

SlickGel ES is composed of a water-soluble base containing urea peroxide and an aqueous solution of EDTA, which aids in chemically removing the smear layer. SlickGel ES primarily provides a lubricating medium that helps with the negotiation of a file into an endodontically treated tooth. This step is important in that it helps prevent blockage during the cleaning and shaping process. Combined with SmearClear,™ used at the end of the procedure, the smear layer can be effectively removed.

SlickGel ES is packaged in single-use 1ml MicroDose polytubes that cut open easily. Twelve SlickGel polytubes are conveniently sealed in a resealable polybag for easy storage and dispensing.

SlickGel ES pack 973-1015  
12 MicroDose polytubes (1ml ea)





**ENDOTOUCH™ TC**

The EndoTouch TC by NSK is our first endodontic motor without a cord or foot pedal. Small, light, and powerful, the EndoTouch TC delivers five torque settings and nine preset speeds, giving the clinician total control during instrumentation. Combined with the durable K3 rotary nickel-titanium files, it is the most advanced system available. Includes pushbutton handpiece.

**FEATURES**

- No cord or foot pedal
- Small, lightweight and comfortable
- Five torque settings
- Nine speed options available from 125 to 625 rpm
- Auto-reverse
- Quick-charge battery

Endotouch TC 110v	815-9122
Endotouch TC 220v	815-9123

16:1 Contra-Angle Replacement Handpiece 815-9125



16:1 Contra-Angle Replacement Handpiece 815-9124



**M4 SAFETY® HANDPIECE**

SybronEndo's M4 Safety Handpiece has several features designed to aid the endodontic practitioner in efficiently and effectively performing root canal therapy. The watch-winding, oscillating movement of the M4 Safety Handpiece keeps the instrument "floating" in the canal. The operator controls coronal and apical pressure, while the M4 smoothly and efficiently "glides" the endo instrument through the canal. That's the "Safety" in the M4 Handpiece.

M4 Safety Handpiece E-Type	25846
----------------------------	-------

*The M4 handpiece is an invaluable aid in creating a smooth glide path to the foramen. I use it with hand files #6 (when needed), #8, #10 and #15 on just about every molar tooth that I treat. With reciprocation, file breakage is not a concern. This handpiece is will deliver predictable and reproducible results.*

— Dr. Fred Barnett

**TCM ENDO III**

The microprocessor-controlled Nouvag TCM Endo III is a slow-speed, electric torque-control motor capable of achieving fast and easy root canal preparation. Speed and maximum torque levels are preselectable and constantly controlled by the TCM Endo III control unit. Speed is constant until the adjusted torque limit is reached, then the motor will reverse for two revolutions and return to the forward direction to finish root canal preparation. The TCM Endo III is compatible with the K3 Rotary System. Handpiece sold separately.

TCM Endo III, 110v	815-9113
TCM Endo III, 220v	815-9114
TCM Endo III, 220v Great Britain	815-9115
TCM Endo III Electric Motor Only	815-9116
TCM Endo III Foot Pedal	815-9117
Shaping Block (5/pk)	815-9021

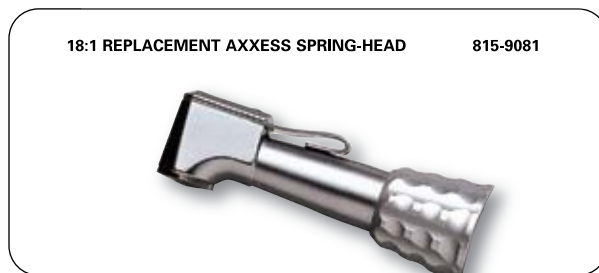


**AXXESS HANDPIECES**

SybronEndo handpieces have long been clinician favorites, are compatible with all manufacturers' e-type couplings and are ideal for K3, Quantec and other rotary files.

The Axxess handpiece provides 5mm of additional clearance (when used with Axxess files such as K3) to ease work in tight posterior regions and will also accept standard rotary files. The 18:1 handpiece is perfect for rotary NiTi use and is available with a variety of heads.

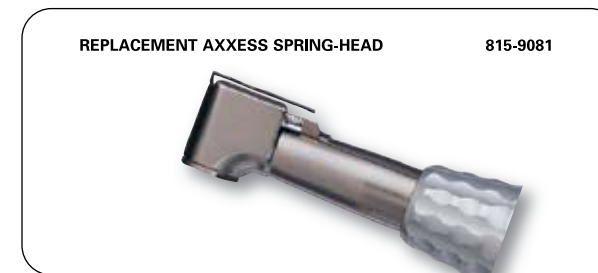
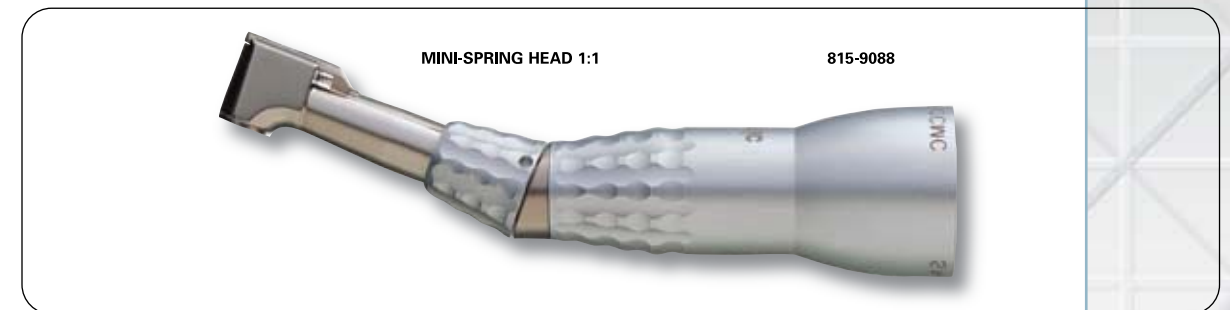
- 18:1 Axxess Spring-Head Handpiece 815-9016
- 18:1 Axxess Latch-Head Handpiece 815-9010
- 18:1 Axxess Push-Button-Head Handpiece 815-9008
- 18:1 Replacement Axxess Spring Head 815-9081



**1:1 HANDPIECE**

SybronEndo's Mini-Spring Head 1:1 Handpiece is ideal for use with the MicroSeal system.

- 1:1 Mini-Spring Head 815-9088
- Replacement Axxess Spring Head 815-9081



**TORQUE LIMITING HANDPIECE**

The new Niti Control handpiece is designed for use with E-type air driven motors. With a gear reduction of 64:1 the mini head Niti Control handpiece also offers multiple torque limits for rotary instrumentation. The Niti Control handpiece can be used with most latch type rotary files on most standard air driven motors.

- 64:1 Niti Control Handpiece 815-9131



Not available in all countries.



Size	21mm	25mm	30mm
<b>80</b>	25941	25957	25973
<b>70</b>	25940	25956	25972
<b>60</b>	25939	25955	25971
<b>55</b>	25938	25954	25970
<b>50</b>	25937	25953	25969
<b>45</b>	25936	25952	25968
<b>40</b>	25935	25951	25967
<b>35</b>	25933	25949	25965
<b>30</b>	25932	25948	25964
<b>25</b>	25931	25947	25963
<b>20</b>	25930	25946	25962
<b>15</b>	25929	25945	25961
<b>10</b>	25928	25944	25960
<b>08</b>	25927	25943	25959
15-40 Assorted	821-3021	821-3025	821-3030
45-80 Assorted	821-3121	821-3125	821-3130

**TRIPLE-FLEX® FILES**  
Triple-Flex Files are triangular-bladed, stainless steel instruments designed for flexibility with integrity. The twisted flutes allow aggressive cutting and debris removal you demand without sacrificing the instrument's inherent stability. Unlike round blades that have flutes ground in, Triple-Flex Files are highly breakage-resistant, even in the most stressful situations. For performance and value you can depend on, Triple-Flex Files are the preferred choice.

Size	21mm	25mm	30mm
<b>80</b>	06026	06099	06170
<b>70</b>	06024	06085	06166
<b>60</b>	06023	06077	06163
<b>55</b>	06022	06076	06162
<b>50</b>	06021	06075	06161
<b>45</b>	06020	06074	06160
<b>40</b>	06019	06069	06159
<b>35</b>	06016	06067	06157
<b>30</b>	06015	06066	06156
<b>25</b>	06014	06065	06155
<b>20</b>	06005	06064	06153
<b>15</b>	06004	06063	06152
<b>10</b>	06003	06062	06151
<b>08</b>	14127	14128	14129
<b>06</b>	62249	62250	62251
15-40 Assorted	821-8021	821-8025	821-8030
45-80 Assorted	821-8121	821-8125	821-8130



**K-FILES**  
K-Files are produced to give the operator a smooth tactile sense inside the canal during instrumentation.

**K-FLEX® FILES**  
K-Flex Files (shown above) feature a unique rhomboid design, which provides a short axis for flexibility while maintaining cross-sectional strength. K-Flex is more flexible than conventional files of comparable size, particularly in sizes #30 and above, which facilitates the negotiation of curved canals and their preparation with minimal potential for ledging and perforating.








Size	21mm	25mm	30mm
<b>70</b>	12796	11354	13278
<b>60</b>	12793	11353	12841
<b>55</b>	12790	11352	12838
<b>50</b>	12787	11351	12835
<b>45</b>	12784	11350	12832
<b>40</b>	12781	11349	12829
<b>35</b>	12778	11348	12826
<b>30</b>	12775	11347	12823
<b>25</b>	12772	11346	12820
<b>20</b>	12769	11345	12817
<b>15</b>	12766	11344	12814
15-40 Assorted	12809	11359	13291
45-80 Assorted	12810	11360	13292

**HEDSTROM FILES**  
Hedstrom Files are ground from stainless steel wire. The flute depth increases with the taper, creating a sharper, more flexible instrument.

Size	21mm	25mm	30mm
<b>80</b>		15174	15258
<b>70</b>		15170	15254
<b>60</b>	15334	15166	15250
<b>55</b>	15330	15162	15246
<b>50</b>	15326	15158	15242
<b>45</b>	15322	15154	15238
<b>40</b>	15318	15150	15234
<b>35</b>	15314	15146	15230
<b>30</b>	15310	15142	15226
<b>25</b>	15306	15138	15222
<b>20</b>	15302	15134	15218
<b>15</b>	15298	15130	15214
<b>10</b>	15294	15126	15210
<b>08</b>	15290	15122	15206
<b>06</b>	60120	60144	60193
15-40 Assorted	821-4021	821-4025	821-4030
45-80 Assorted		821-4125	821-4130



- K-FLEX® FILES 
- TRIPLE-FLEX® FILES 
- K-FILES 
- HEDSTROM FILES 
- REAMERS 

**REAMERS**

Reamers are made from stainless steel wire that is ground to a triangular shape and twisted.



Size	21mm	25mm	30mm
<b>Pkg of 6</b>			
45	06040	06132	
40	06038	06131	
35	06034	06127	
30	06033	06126	
25	06032	06120	
20	06031	06112	
15	06030	06111	
10	06029	06110	
08	14133	14134	
06	62252	62253	62254
15-40 Assorted	821-2021	821-2025	



**BARBED BROACHES**

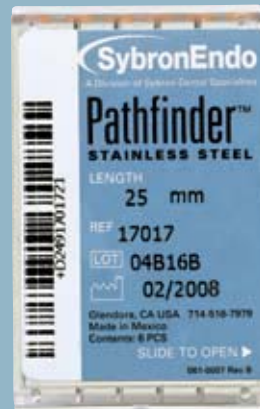
Barbed Broaches are 21mm in length and come presterilized.

Pkg of 30	SIZE	
●	XXXF	17008
●	XXF	17009
●	XF	17010
●	F	17011
●	M	17012
●	C	17013
	Assorted Package	17014
	(10 each: XXXF, XXF, XF)	
	Assorted Package	17015
	(10 each: F, M, C)	

**PATHFINDER™**

Stainless steel Pathfinder instruments feature a minimal taper and are used for negotiating difficult or calcified canals.

Pkg of 6	
21mm	17023
25mm	17017



**PATHFINDER™ CS**

Pathfinder CS instruments feature the same minimal taper as stainless steel Pathfinders but are made with carbon steel to help negotiate difficult or calcified canals faster and more efficiently.

Pkg of 6	SIZE	HANDLE	19mm	21mm	25mm
	K1	Dark Brown	22935	22936	23465
	K2	Orange	22937	22938	23467



**STERILE K-FLEX AND HEDSTROM FILES**

SybronEndo now offers some of our most popular stainless steel hand files, K-Flex and Hedstrom, in new sterile packs. Our sterile handfiles will help doctors reduce preparation time, lower sterilization costs and ensure patient safety from contaminated files. Safe for your patients, convenient for you and perfect for all endodontic practitioners.

**STERILE K-FLEX**

Size	21mm	25mm
<b>Pkg of 60</b>		
40	62112	62201
35	62110	62200
30	62109	62198
25	62108	62197
20	62106	62190
15	62105	62182
10	62104	62174
08	62102	62173
06	62101	62170
15-40 Assorted	62118	62217

**STERILE HEDSTROM**

Size	21mm	25mm
<b>Pkg of 60</b>		
50		62615
45		62614
40	62457	62613
35	62456	62612
30	62455	62593
25	62454	62592
20	62453	62591
15	62452	62588
15-40 Assorted	62449	62623

**GATES GLIDDEN**

Gates Glidden instruments are used primarily for shaping the coronal third of the root canal.

Pkg of 6/18mm	
No. 1	17283
No. 2	17284
No. 3	17285
No. 4	17286
No. 5	17287
No. 6	17288
No. 1-6 Assorted	17289



SybronEndo has the products you need to effectively lubricate and irrigate your canals. From lubrication with SlickGel ES to the most effective irrigation available using SmearClear, SybronEndo "Solutions" get the job done.

C L E A N

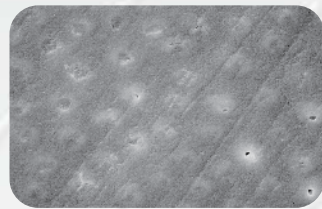
# CLEAN

SMEARCLEAR	30
SLICKGEL ES	30
PAPER POINTS	31
STROPKO IRRIGATOR AND ACCESSORIES	31

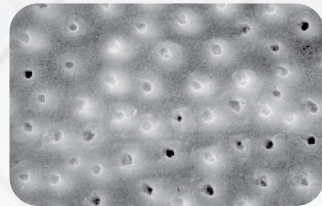




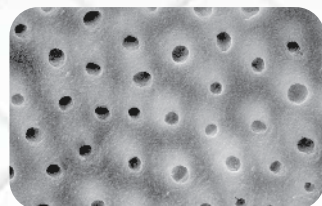
More efficient files and shaping techniques call for a more effective irrigant. SmearClear enhanced EDTA <6% enhanced Sodium Hypochlorite is made for the new generation of filing techniques.



5.25% NaOCl



17% EDTA



SmearClear

Photos (200x) show decimal tubules after instrumentation, a NaOCl soak and further one-minute soak in the respective irrigant. Photos and study courtesy of Drs. J. Jantarat, K. Yanpiset and C. Harnirattisai.



**SMEARCLEAR™**

Successful endodontic therapy demands a clean and clear root canal system. SmearClear's enhanced EDTA formulation addresses this issue by consistently removing the smear layer and leaving the dentinal tubules clear of organic matter. The practitioner will recognize an increase in the efficacy of adhesives as well as an assist in the 3-dimensional obturation of the root canal system.

<b>SmearClear Kit</b>	<b>973-1001</b>
<b>SmearClear Liquid Refill</b>	<b>973-1002</b>
<b>Syringe (3) and Side-Vented Needle (30) Refill</b>	<b>973-1003</b>



**SLICKGEL™ ES**

SlickGel™ ES is specially formulated water-based suspension to aid in the negotiation of root canals by endodontic instruments. Each MicroDose® polytube contains EDTA that chelates calcifications in the root canal system. Sodium hypochlorite irrigants react with SlickGel ES's urea peroxide to produce vigorous bubbling action that helps flush debris from the root canal system.

<b>SlickGel ES pack</b>	<b>973-1015</b>
<b>12 MicroDose polytubes (1ml ea)</b>	

**PAPER POINTS**

Autofit® Paper Points are rolled to exact specifications and provide excellent absorbency for your root canal preparation.

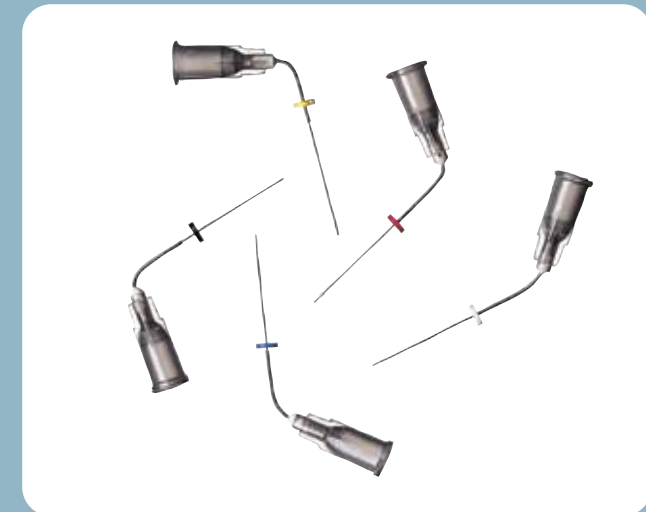
Developed by Dr. L. Stephen Buchanan, Autofit Paper Points are an integral part of the Autofit system. Various sized tapers are color-coded for easy ID and will fit perfectly into Greater Taper preparations.

**Greater Taper Paper Points**

(Pkg of 100)	
<b>Assorted</b>	<b>972-0110</b>
<b>Size .04</b>	<b>972-0111</b>
<b>Size .06</b>	<b>972-0112</b>
<b>Size .08</b>	<b>972-0113</b>
<b>Size .10</b>	<b>972-0114</b>
<b>Size .12</b>	<b>972-0115</b>

**ISO/MicroSeal Paper Points**

(Pkg of 100)	
<b>.25mm tip .02 taper</b>	<b>815-9001</b>
<b>.25mm tip .04 taper</b>	<b>815-9002</b>



**STROPKO NITI FLEXI-TIPS™**

SybronEndo's 30-gauge nickel-titanium irrigating needle tips are flexible enough to facilitate access in any canal. The tips are slotted and side vented for safe irrigation. They are not only fully autoclavable, but they are also coated on the inside and outside to protect against the corrosive effects of sodium hypochlorite. The universal luer-style design is available in 17mm and 25mm working lengths.

<b>17mm (pkg of 6)</b>	<b>973-1004</b>
<b>25mm (pkg of 6)</b>	<b>973-1005</b>

**STROPKO IRRIGATOR™**

The Stropko Irrigator places the perfect amount of air and water pressure into the field. Its small, luer-lock tips do not impede visibility during irrigation or drying and are excellent for use under the microscope. Fits most Triplex air/water syringes.

<b>Stropko Irrigator</b>	<b>975-0039</b>
<b>Stropko Blue Irrigation Tips</b>	<b>975-0120</b>

**ADAPTER**

Most units accommodate the Stropko without the use of an adapter. For old Adec units or Triplex syringes, an adapter may be needed to accommodate the Stropko. The adapter will modify a female-type syringe head into a male screw-type syringe. The thread measurements on the adapter are 5/16 – 32.

<b>Adapter</b>	<b>975-0040</b>
----------------	-----------------



**TF PAPER POINTS (Pkg of 100)**

TF Paper Points (presterilized) have been made specifically for use with the TF Rotary NiTi Files.

**Taper**

<b>.12</b>	<b>822-0002</b>
<b>.10</b>	<b>822-0001</b>
<b>.08</b>	<b>822-0008</b>
<b>.06</b>	<b>822-0006</b>
<b>.04</b>	<b>822-0004</b>
<b>Assorted .04-.12</b>	<b>822-0000</b>

Back in the mid-1800s, gutta percha debuted as a breakthrough endodontic filler. Today a new technology has arrived to replace the old one. SybronEndo introduces RealSeal 1™ Warm-Bonded Obturation System utilizing the filling material Resilon®. All the components of RealSeal 1 – sealer, filler and core – are resin-based materials and bond with each other to form a superior seal.

## OBTURATION

<b>NEW</b> ▶	REALSEAL 1	34	BUCHANAN HAND PLUGGERS	46
	ELEMENTS OBTURATION UNIT	38	BUCHANAN HEAT PLUGGER TIP STAND	46
	REALSEAL	40	SYSTEM B HEAT SOURCE AND ACCESSORIES	47
	REALSEAL SE	42	TOUCH 'N HEAT 5004 AND ACCESSORIES	49
<b>NEW</b> ▶	EPIPHANY	43	ABSORBENT POINTS	50
	TIP SNIP	44	FINGER PLUGGERS AND SPREADERS	50
	GUTTA PERCHA	45, 48	SEALERS	51
	TF GUTTA PERCHA	45	XPRESS SEALERS	51
	PAPER POINTS	45	OBTURA AND ACCESSORIES	52
	TF PAPER POINTS	45	MICROSEAL ACCESSORIES	53
	BUCHANAN HEAT PLUGGERS	46		

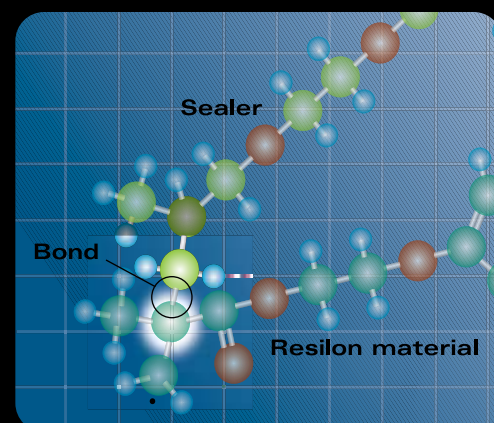
# OBTURATION



SEE OUR NEW REALSEAL 1 BONDED OBTURATION SYSTEM ▶ PAGE 34.

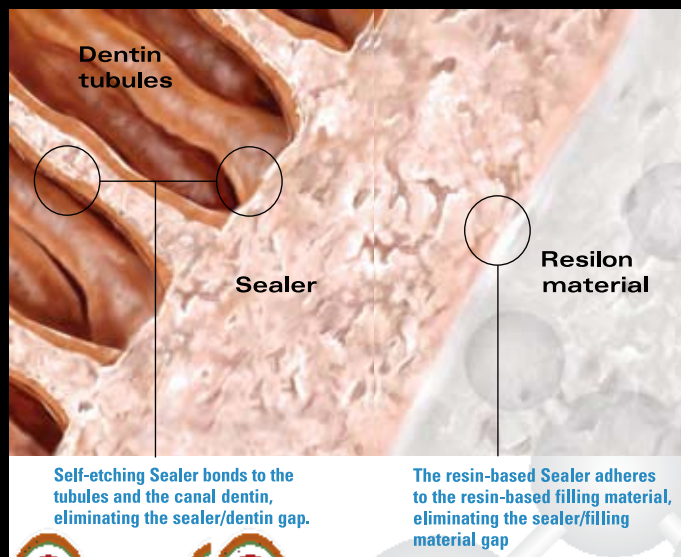
# REALSEAL 1 — THE PREMIER WARM-BONDED OBTURATOR

RealSeal 1 Bonded Obturator™ is the next generation in carrier-based delivery systems. All the components of RealSeal 1 – sealer, filler and core – are resin-based materials and bond with each other to form a superior seal. Creating a true chemical bond when materials contact, this proven technology provides superior leakage prevention.<sup>1</sup> As an added benefit, this system's core is engineered to be easily discernable on a radiograph from the Resilon filling material that coats it.

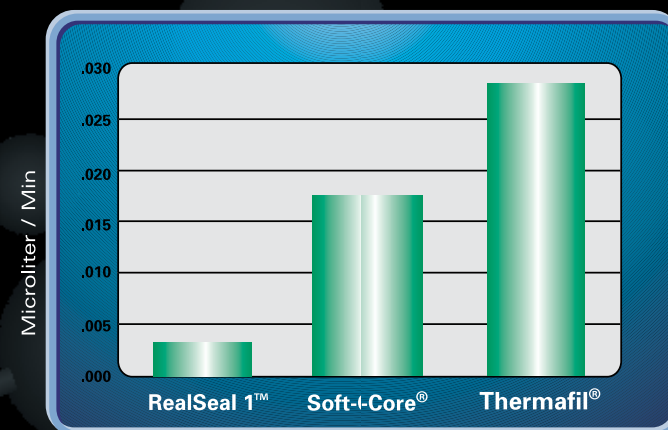


Methacrylate monomers in the Sealer and the Resilon material of the Obturator bond chemically with each other.

When the Obturator is placed into the canal with the heated Resilon on its surface, the resin monomer molecules in the unset Sealer diffuse into the Resilon material. They cross-link with the molecular components of the Resilon formula and co-polymerize with them to form a homogeneous resin matrix.<sup>2</sup> A seamless interface forms along the length of the Obturator, eliminating gaps and potential pathways for leakage and reinfection.



An obturation system has one primary function – sealing the root canal. RealSeal 1 creates a superior seal, preventing leakage and re-infection. In an independent blind study conducted at the University of Rome, the RealSeal 1 Obturation System resisted leakage 6 times better than the Soft-Core® System and nearly 10 times better than the Thermafil® System.



Fluid filtration leakage study: Leakage resistance

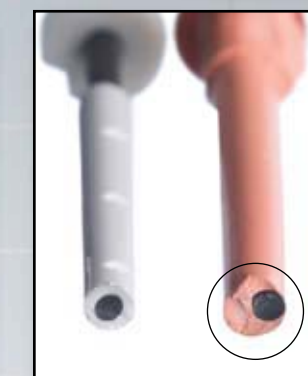
1. "A Fluid Filtration Comparison of Gutta-Percha Versus Resilon: A New Soft Resin Obturation System." Stratton et al., U.S. Army Dental Activity, Fort Bragg, NC. Abstract: #OR20, JOE, Vol. 31(3), March 2005.  
 2. Reference www.resilonresearch.com.

## Quality that's apparent

The RealSeal 1 Obturators and Verifiers are injection molded for extreme accuracy and precision. Each RealSeal 1 Obturator is centered inside the Resilon filling material, ensuring that all of the canal walls are coated as evenly as possible. Compare this to the inconsistent coverage of hand dipped-obturators from the current market leader in carrier-based systems.



Injection molding ensures a consistent amount of Resilon as the RealSeal 1 core (bottom) is centered in the middle of the filling material.



A hand-dipped obturator (right) often results in uneven distribution of the filling material.

## Superior radiopacity

The RealSeal 1 filling material has a higher radiopacity than gutta-percha. RealSeal 1 also offers dual radiopacity — the core and filling material have different levels of radiopacity. As a result of this "dual" radiopacity, you are able to see the core's location relative to the filling material inside the root canal. The dual radiopacity makes it easy to see when the core is placed too long or too short within the canal. The competitive carrier-based systems with monochromatic radiopacity do not have this feature.



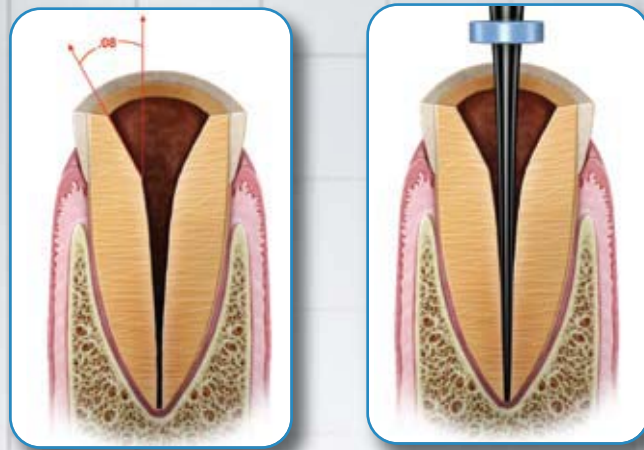
Radiograph showing positioning of RealSeal 1's core material.



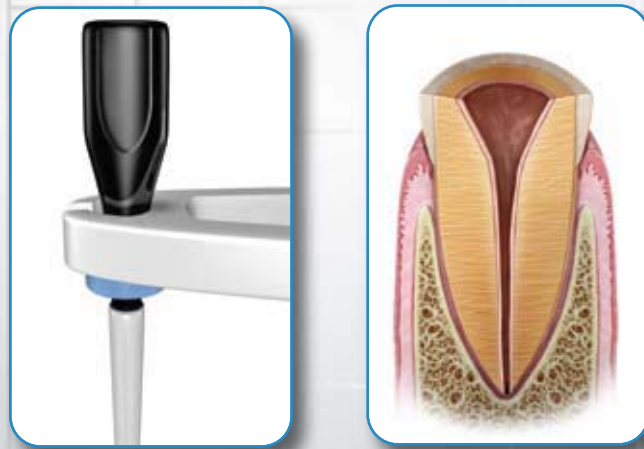
Radiograph of RealSeal 1 Obturator.

Radiograph courtesy of Marvin W. Berlin, DDS, mckinneydentist.com

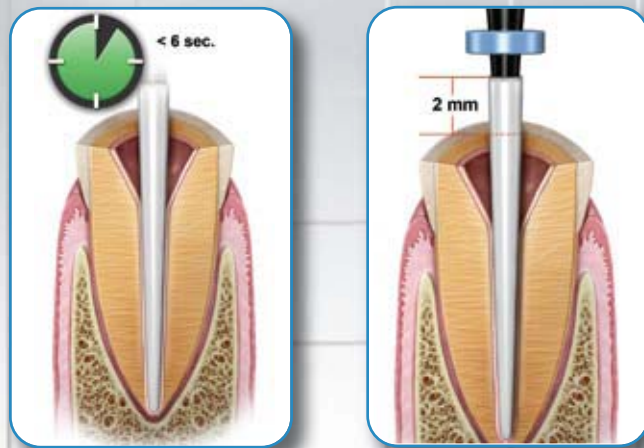
### Ease of application



Prepare the canal with a .08 coronal flare and select the appropriate size obturator via size verifiers.



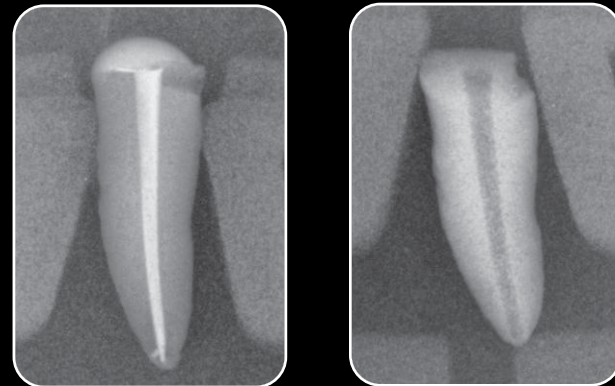
Heat Obturator in the RealSeal 1 Oven and coat the canal walls with self-etch sealer.



Seat RealSeal 1 Obturator in the canal within 10 seconds. For short canals, you can also trim off 2mm of the Resilon material.

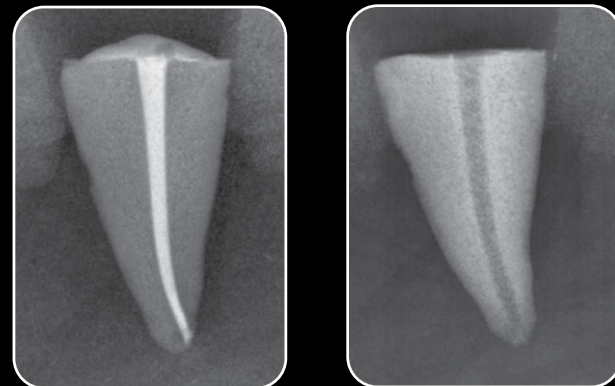
### Easily retrieved

RealSeal 1 Obturators are easily retrieved via mechanical means or chloroform can be used to dissolve the entire obturator. In Case A below, the obturator was removed using a small amount of chloroform and hand files and the canal re-instrumented in a little over 3 minutes. In Case B below, the obturator was removed with chloroform only and re-instrumented in slightly more than 7 minutes.



Case A - Filled

Retrieved



Case B - Filled

Retrieved

### Latex free

The filling material used with RealSeal 1 is made from polymers of polyester and not gutta percha. This resin-based material (Resilon) does not contain rubber or rubber-based materials. Consequently, RealSeal 1 is ideal to use with patients who have latex allergies.



**RealSeal 1 — Oven** 972-2019  
Oven, Instructions



Oven

**RealSeal 1 — Intro Kit** 972-2000  
4 ml syringe of RealSeal SE Self-Etch Sealer  
Small Plastic Practice Block  
Large Plastic Practice Block  
1 pack each of #25, #30, #35 Verifiers  
1 pack each of #25, #30, #35 Obturators  
Instructions, DVD, Technique Guide



Intro Kit

### RealSeal 1 — Obturators (pk of 6)

#20	972-2020
#25	972-2025
#30	972-2030
#35	972-2035
#40	972-2040
#45	972-2045
#50	972-2050
#55	972-2055
#60	972-2060
#70	972-2070
#80	972-2080
#90	972-2090

### RealSeal 1 — Verifiers (pk of 6)

#20	972-2120
#25	972-2125
#30	972-2130
#35	972-2135
#40	972-2140
#45	972-2145
#50	972-2150
#55	972-2155
#60	972-2160
#70	972-2170
#80	972-2180
#90	972-2190



Obturator & Verifier packs

**RealSeal SE Self-Etch Sealer**  
Sealer syringe (pkg of 1) 972-2012  
Mixing Tips (pkg of 12) 972-2011



Self-Etch Sealer



# Efficient. Predictable. Accurate. And it's so simple.

### CONVENIENT CARTRIDGE DELIVERY

Proprietary disposable cartridges (gutta percha or RealSeal) minimize cross contamination risk and eliminate tedious, time-consuming cleanup. Made of silver for excellent heat conductivity, they load and disengage easily.



Heats Quickly; Shuts Off Automatically



Amount of material remaining in cartridge

Silicone Boot

Tip Temperature Continuously Maintained and Displayed

Silicone Boot

Choice of Speeds

Micro-Motor Eliminates Hand Fatigue

Pencil Grip Enhances Tactile Feedback for Greater Control

Easy-to-Read Polarized Tilting Screen Eliminates Glare and Provides Placement Flexibility

Handpiece Button Provides One-Touch Control for Instant Heating and Cooling with Automatic Timeout for Safety

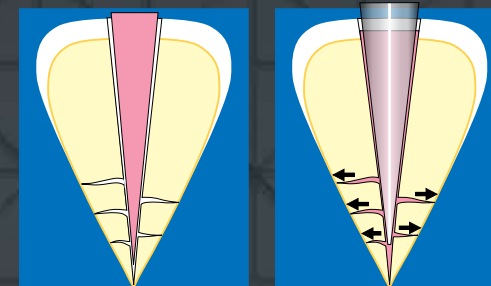
One-Touch Controls for Efficiency and Accuracy

Small Footprint Takes Up Only 1/3 the Space of Two Separate Machines

Medical-Grade Connections Ensure Longevity and Accuracy

### ELEMENTS OBTURATION UNIT™

The Elements Obturation Unit combines our System B™ technology with a motor-driven extruder handpiece to make obturation efficient, predictable, and accurate. From downpack to backfill, the Elements Obturation Unit puts the Continuous Wave of Condensation Technique into one simple-to-operate device that takes up only 1/3 the space of two separate machines.



### SYSTEM B PLUNGER MAXIMIZES CONDENSATION FORCE FOR COMPLETE FILL

Matched Autofit plungers replicate the canal shape and maximize condensation forces to move fill material and sealer into all areas of the root canal, including lateral canals, which ensures a complete fill.

.04 Plunger 952-0031

Hot Pulp Test Tip 973-0219

### .04 TAPER WITH SMALLER TIP IMPROVES FILLING

The .04 taper plunger is 40% smaller which allows access into even the smallest canals. The .04 plunger fits both the original System B and the Elements Obturation Unit.

### FEATURES AND BENEFITS

#### System B

- One-touch controls for downpack, backfill and hot pulp testing
- Each function has preset temperature and duration
- Tip temperature is continuously maintained and displayed
- Time-out feature prevents overheating
- Automatic shut-off precludes using wrong or worn-out tip
- Plugger heats instantly for immediate use

#### Extruder

- Motorized handpiece eliminates hand fatigue and precludes voids
- Pencil-grip handpiece enhances control and fits standard handpiece holders
- Precise temperature control for consistency
- Extra-long prebent needles offer convenience and unprecedented visibility
- Heats quickly and shuts off automatically
- Handpiece shows remaining material

#### Handpieces

- Plugger and extruder handpieces are lightweight, strong and durable
- Insulation technology keeps handpieces cool for you and the patient
- Aluminum shields minimize downtime – use one while autoclaving the other

### ELEMENTS OBTURATION UNIT AND PARTS

Obturation Unit	973-0322
Obturation Unit (w/o Handpieces)	973-0325
Extruder Handpiece (w/ 2 Shields)	973-0326
System B Handpiece (w/ 2 Shields)	973-0327
Extruder Handpiece Shield (pkg of 2)	973-0331
System B Handpiece Shield (pkg of 2)	973-0332
Power Supply (Transformer)	973-0333
AC Power Cord, US	973-0334
AC Power Cord, Europe	973-0335
AC Power Cord, UK	973-0336

Gutta Percha	
Gauge 20 (medium body)	972-1001
Gauge 20 (heavy body)	972-1004
Gauge 23 (medium body)	972-1002
Gauge 23 (heavy body)	972-1005
Gauge 25 (light body)	972-1003

ELEMENTS OBTURATION CARTRIDGES (pkg of 10)	
RealSeal	
Gauge 20	972-2001
Gauge 23	972-2002

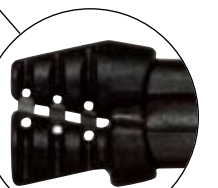


### SILICONE BOOTS

System B Handpiece (pkg of 2)	973-0330
Extruder Handpiece (pkg of 2)	973-0329

### NEEDLE BENDING TOOL

973-0337





*RealSeal brings endodontics into the age of adhesive dentistry. Re-infection can be minimized when we prevent bacterial recolonization and entomb remaining micro-organisms by creating a complete seal of the entire length of the root canal system. RealSeal has the potential to seal the entire root canal space from orifice to apex, something not accomplished by gutta percha.*

*– Joseph D. Maggio, DDS,  
Chicago, Illinois*

**REALSEAL™**

RealSeal is an endodontic filling material with the familiar handling of gutta percha and the added vital benefits of a superior seal. Because RealSeal is applied in the same way as gutta percha, adapting it to your current system is as seamless as the seal it creates. Use the obturation technique of your choice, adding only a priming step before filling.

Why do we call it RealSeal? Because it is the endodontic filling material that provides a REAL seal. And Resilon™\*, the primary component of RealSeal, has also been proven to be biocompatible, nontoxic and nonmutagenic.<sup>1</sup>

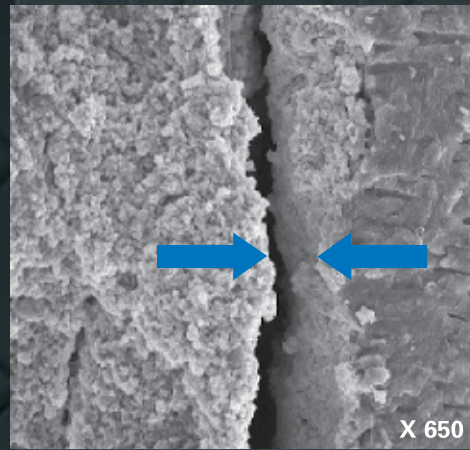
**RealSeal is:**

- **Leak-Resistant.** Unlike gutta percha, RealSeal leaves no gap for leakage. Coronal and apical leakage is substantially reduced.
- **Strengthening.** Gives the root significant toughness.
- **Technique-Compatible.** Works with your current filling method.
- **Retreatable.** With chloroform and/or heat. Like Grossman's formula, retreatments are easy.
- **Radiopaque.** Just like your current method of obturation, detection is not a problem.

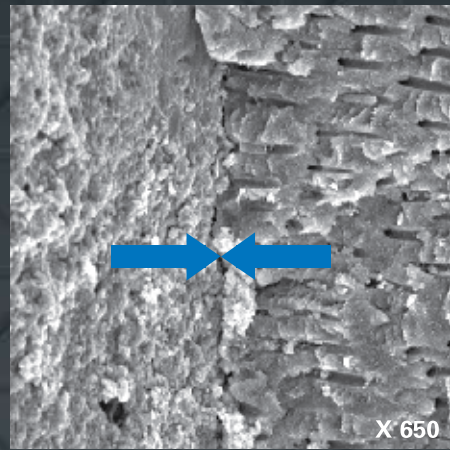
\* Resilon is a trademark of Resilon Research, LLC.

<sup>1</sup> Loma Linda University Biocompatibility and Toxicology Research Laboratory, Evaluation of Cytotoxicity of Resilon and its Extracts Using the Agar Diffusion Method. Conclusion: Resilon is non cytotoxic using the agar diffusion method.

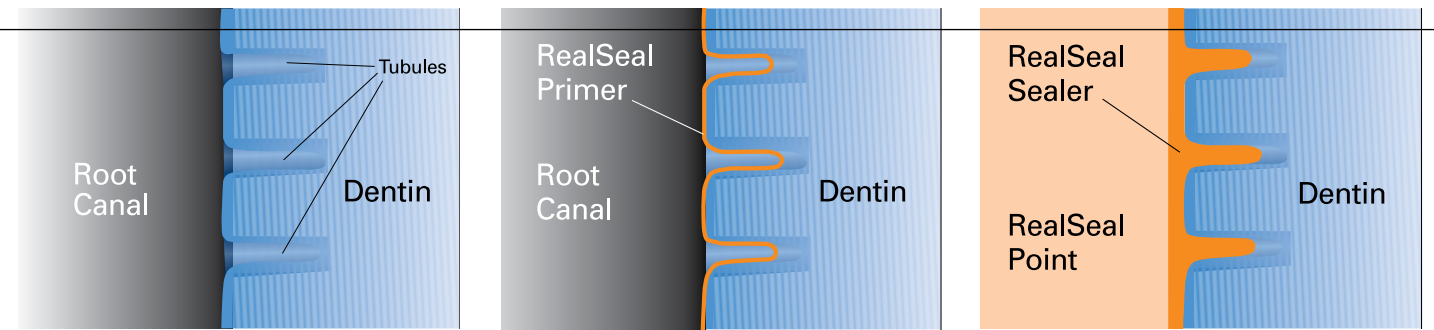
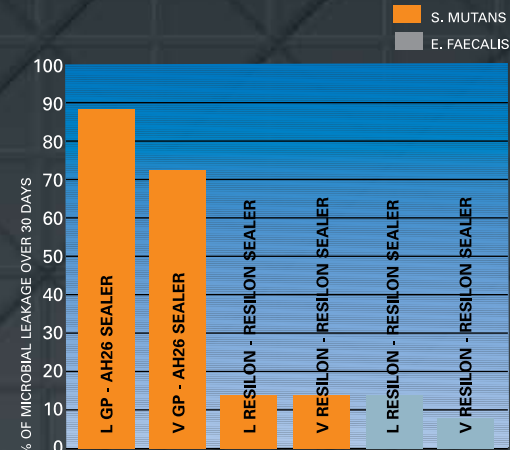
**A SUPERIOR SEAL DRAMATICALLY REDUCES LEAKAGE**



Traditional gutta percha shows fissures and gaps between its surface and the dentin – just the place for harmful bacteria to multiply.

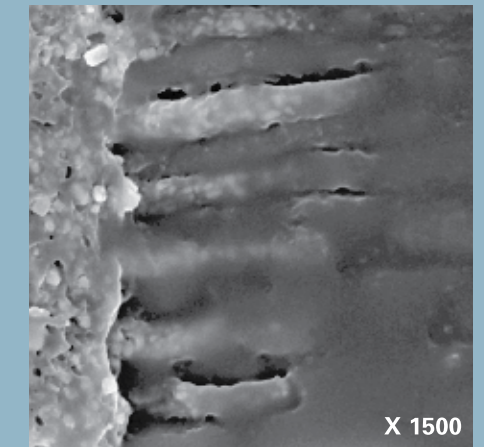


RealSeal (Resilon™) fills seamlessly and smoothly, eliminating leakage.



**HOW REALSEAL WORKS**

Based on polymers of polyester, RealSeal contains bioactive glass, Ca(OH)<sub>2</sub>, and radiopaque filler, giving you a seamless seal.



RealSeal resin tags. No other sealer can offer this kind of bonding.

**NO LEARNING CURVE**

The RealSeal endodontic obturation system now offers an additional choice of resin-based sealers – RealSeal SE™ Self-Etch Sealer. This new self-etch sealer eliminates the priming step without hindering the sealer's performance.



RealSeal SE provides all the benefits of the original RealSeal resin sealer and gives just as superior a seal. And when switching from gutta percha to the RealSeal SE system, there's absolutely no change in technique needed.



**Proven Strengthening**

GROUPS	MEAN
Control/No Obturation	465.39
Lateral Gutta Percha	391.51
Vertical Gutta Percha	392.37
Lateral Resilon™	504.22
Vertical Resilon™	498.23

Source: F.B. Teixeira, E.C. Teixeira, J.Y. Thompson, and M. Trope. IADR/AADR/CADR 82nd General Session, March 10-13, 2004.

*RealSeal is the real deal! It strengthens the root, seals the canal system and is simple to use. The protocol allows me to incorporate my current obturation technique. The core and sealer "marry" together with the canal walls to provide a true chemical bond.*

*– Gary Glassman DDS, FRCD(C)  
Toronto, ON, Canada*

**RealSeal Kits**

All kits contain: Root Canal Sealant (with 12 mixing tips), 3 ml Thinning Resin, 6 ml Primer, Mixing Wells (25) and Applicator Brushes (25)

972-2100	Intro Kit
	.04 Taper #15 – #40 (20/per size)
	.06 Taper #15 – #40 (20/per size)
972-2102	.02 Taper Kit
	.02 Taper #15 – #40 (20/per size)
	Accessory Points (20/per size)



**RealSeal Refills**

972-2004	Pellets (pkg of 100)
972-2010	Root Canal Sealant (with 12 mixers)
972-2006	3 ml Thinning Resin
972-2007	6 ml Primer
972-2008	Mixing Wells (25)

**Accessory Points (6 vials of 20)**

972-2301	XF (X-Fine)
972-2302	FF (Fine-Fine)
972-2303	MF (Medium-Fine)
972-2304	F (Fine)
972-2305	FM (Fine-Medium)
972-2306	M (Medium)
972-2307	L (Large)
972-2310	Assorted (XF-FF-MF-F-FM-M)

**Autofit Points (pkg of 50)**

972-2311	.04 Taper
972-2312	.06 Taper
972-2313	.08 Taper
972-2314	.10 Taper
972-2315	.12L Taper (1.35 mm max dia)
972-2316	.12S Taper
972-2320	Assorted Pack Taper (.06 – .12 Taper)

**.02 Taper Points (pkg of 100)**

972-2220	Size #20
972-2225	Size #25
972-2230	Size #30
972-2235	Size #35
972-2240	Size #40
972-2245	Size #45
972-2250	Size #50
972-2255	Size #55
972-2260	Size #60
972-2270	Size #70
972-2280	Size #80
972-2201	Assorted Sizes #15 – #40
972-2202	Assorted Sizes #45 – #80
972-2203	Assorted Sizes #90 – #140

**.04 Taper Points (pkg of 50)**

972-2420	Size #20
972-2425	Size #25
972-2430	Size #30
972-2435	Size #35
972-2440	Size #40
972-2445	Size #45
972-2401	Assorted Sizes #15 – #40

**.06 Taper Points (pkg of 50)**

972-2620	Size #20
972-2625	Size #25
972-2630	Size #30
972-2635	Size #35
972-2640	Size #40
972-2645	Size #45
972-2601	Assorted Sizes #15 – #40

**Autofit Backfill Points (pkg of 60)**

972-2321	F (Fine)
972-2322	FM (Fine-Medium)
972-2323	M (Medium)
972-2324	ML (Medium-Large)



**RealSeal SE Self-Etch Sealer**

972-2012	RealSeal SE Self-Etch Sealer Syringe
972-2011	Mixing tip refill (12)

**Refills**

N59D	Pellet Kit
N59DA	Pellet 100pk
N59E	Sealer Syringe
N59F	Primer
N59G	Thinning Resin
N59J	Mixing Tips
N59R	Accessory Kit

**.02 Taper Points (pkg of 120)**

N59SA	.02/15
N59SB	.02/20
N59SC	.02/25
N59SD	.02/30
N59SE	.02/35
N59SF	.02/40
N59SG	.02/45
N59SH	.02/50
N59SI	.02/55
N59SJ	.02/60
N59SK	.02/70
N59SL	.02/80
N59SM	.02/90
N59SN	.02/100
N59SO	.02/110
N59SP	.02/120
N59SQ	.02/130
N59SR	.02/140
N59SS	.02/15-40 Asstd
N59SU	.02/45-80 Asstd
N59SV	.02/90-140 Asstd

**.02 Taper Points (pkg of 50)**

N59TAA	.02/15
N59TAB	.02/20
N59TAC	.02/25
N59TAD	.02/30
N59TAE	.02/35
N59TAF	.02/40
N59TAG	.02/45
N59TAH	.02/50
N59TAI	.02/55
N59TAJ	.02/60
N59TAK	.02/70
N59TAL	.02/80
N59TAM	.02/90
N59TAN	.02/100
N59TAO	.02/110
N59TAP	.02/120
N59TAQ	.02/130
N59TAR	.02/140

**.04 Taper Points (pkg of 120)**

N59UA	.04/15
N59UB	.04/20
N59UC	.04/25
N59UD	.04/30
N59UE	.04/35
N59UF	.04/40
N59UG	.04/45
N59UH	.04/50
N59UI	.04/55
N59UJ	.04/60
N59UK	.04/15-40 Asstd

**.04 Taper Points (pkg of 50)**

N59TBA	.04/15
N59TBB	.04/20
N59TBC	.04/25
N59TBD	.04/30
N59TBE	.04/35
N59TBF	.04/40
N59TBG	.04/45
N59TBH	.04/50
N59TBI	.04/55
N59TBJ	.04/60

**.06 Taper Points (pkg of 50)**

N59TCA	.06/15
N59TCB	.06/20
N59TCC	.06/25
N59TCD	.06/30
N59TCE	.06/35
N59TCF	.06/40
N59TCG	.06/45

**.06 Taper Points (pkg of 120)**

N59VA	.06/15
N59VB	.06/20
N59VC	.06/25
N59VD	.06/30
N59VE	.06/35
N59VF	.06/40
N59VG	.06/45
N59VH	.06/15-40 Asstd

**Accessory Points (pkg of 50)**

N59TDA	X Fine
N59TDB	Fine-Fine
N59TDC	Med-Fine
N59TDD	Fine
N59TDE	Fine-Med
N59TDF	Medium
N59TDG	Med-Large
N59TDH	Large

**Accessory Points (pkg of 120)**

N59WA	X Fine
N59WB	Fine-Fine
N59WC	Med-Fine
N59WD	Fine
N59WE	Fine-Med
N59WF	Medium
N59WG	Med-Lrg
N59WH	Large
N59WI	XFine-Med



**Epiphany Kits**

N59A	.02 Taper Kit
N59B	.04 Taper Kit
N59C	.06 Taper Kit



**SE Sealer & Kits**

N59X	SE Sealer
N59XA	SE .02 Kit
N59XB	SE .04 Kit
N59XC	SE .06 Kit
N59XD	SE Pellet Kit



**TIP SNIP™**

Using a measurement dial, the Tip Snip flush cuts gutta percha to the apex size you need.

Tip Snip 815-9042



**GUTTA PERCHA**

SybronEndo's radiopaque gutta percha is the time-proven fill for your root canal therapies.

**AUTOFIT® GREATER TAPER GUTTA PERCHA**

Developed by Dr. L. Stephen Buchanan, Autofit gutta percha is the latest innovation in filling materials. Greater Taper cones are designed to match canals shaped with Greater Taper files. Autofit cones have a parallel shank that is tapered to a point (similar to the end of a pencil).

**GREATER TAPER – PKG OF 50**

Taper	Product Code
Assorted .06-.12	972-0100
.12L (1.35mm max. diameter)	972-0105
.12 (.98mm max. diameter)	972-0107
.10	972-0104
.08	972-0103
.06	972-0102
.04	972-0101

**AUTOFIT BACKFILL GUTTA PERCHA**

Autofit Backfill gutta percha cone sizes directly correspond with the sizes of the Buchanan Heat Pluggers. Once the initial down-pack is complete, backfill cones perfectly fill the pluggers void. Tip diameter for the pluggers and backfill cones is .5mm, so there is no need to "snip" them. Backfill cones have a nonstandard, continuous taper and are shorter than typical gutta percha.

PKG OF 60	Product Code
Backfill Fine	972-0020
Backfill Fine-Medium	972-0021
Backfill Medium	972-0022
Backfill Medium-Large	972-0023

**AUTOFIT FEATHERED TIP GUTTA PERCHA (NONSTANDARD)**

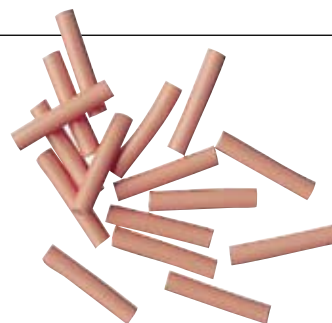
Nonstandard gutta percha cones exhibit a larger, continuous taper all the way up the cone than does ISO gutta percha. These cones are feathered tipped and perform well with the Touch 'n Heat and System B.

PKG OF 100	Product Code
Fine-Fine	952-0010
Medium-Fine	952-0011
Fine	952-0012
Fine-Medium	952-0013
Medium	952-0014
Medium-Large	952-0015
Large	952-0016

**OBTURA PELLETS**

Pkg of 100 972-0008

Limited European distribution.



**TF Gutta Percha and Paper Points (presterilized) have been made specifically for use with the TF Rotary NiTi Files.**

TF GUTTA PERCHA		TF PAPER POINTS	
PKG OF 100	Tip	PKG OF 100	Taper
.12	25	.12	822-0002
.10	25	.10	822-0001
.08	25	.08	822-0008
.06	25	.06	822-0006
.04	25	.04	822-0004
Assorted .04-.12	25	Assorted .04-.12	822-0000

**AUTOFIT PAPER POINTS**

SybronEndo Paper Points are rolled to exact specifications and provide excellent absorbancy for your root canal preparation.

Developed by Dr. L. Stephen Buchanan, Autofit Paper Points are an integral part of the Autofit system. Various sized tapers are color-coded for easy ID and will fit perfectly into Greater Taper preparations.

**GREATER TAPER PAPER POINTS**

Taper	Product Code
.12	972-0115
.10	972-0114
.08	972-0113
.06	972-0112
.04	972-0111
Assorted	972-0110



**K3 GUTTA PERCHA**

Taper	Tip	Product Code
.06	45	825-0645
.06	40	825-0640
.06	35	825-0635
.06	30	825-0630
.06	25	825-0625
.06	20	825-0620
.06	20-40 Assorted	825-0600
.06	Feather Tip	825-0048
.04	45	825-0445
.04	40	825-0440
.04	35	825-0435
.04	30	825-0430
.04	25	825-0425
.04	20	825-0420
.04	20-40 Assorted	825-0400
.04	Feather Tip	825-0047

**MICROSEAL MICROFLOW MASTER CONES**

ISO standard gutta percha directly matches standard-sized files, meaning the taper is 2% or .02 taper all the way up the gutta percha cone. ISO gutta percha is ideal for MicroSeal or cold lateral condensation.

**MICROSEAL MASTER CONE**

PKG OF 50	Taper	Tip	Product Code
	.04	25	815-9033
	.02	60	815-9040
	.02	55	815-9039
	.02	50	815-9038
	.02	45	815-9037
	.02	40	815-9036
	.02	35	815-9035
	.02	30	815-9034
	.02	25	815-9032

**MICROSEAL ISO PAPER POINTS**

PKG OF 100	Taper	Tip	Product Code
	.04	25	815-9002
	.02	25	815-9001

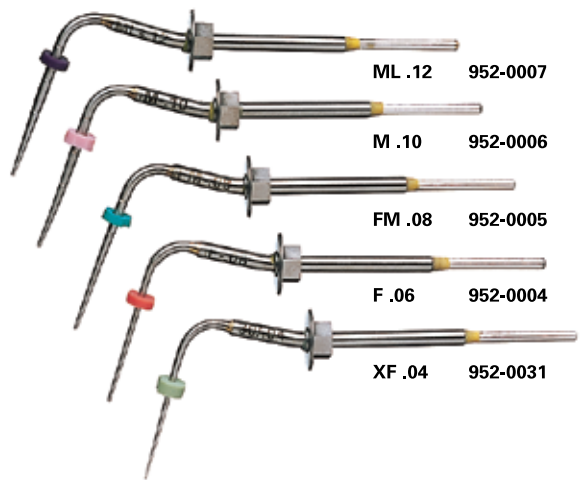




**BUCHANAN HEAT PLUGGERS**

Available individually or in a prepackaged kit of five, the Buchanan Heat Pluggers have revolutionized warm gutta percha techniques. These high-quality pluggers have a shape that closely matches the final root canal preparation. This maximizes condensation forces on the softened gutta percha without placing undue stress on the root canal system. Because the Elements Obturation Unit and the System B Heat Source provide an exact temperature throughout the procedure, the Buchanan Pluggers do not over-soften the gutta percha, and the warm mass fills lateral canals as easy as it seals apically. When you disengage the heat, the pluggers cool almost instantly and separate easily from the condensed gutta percha.

<b>Buchanan Pluggers (pkg of 5)</b>	<b>952-0003</b>
<b>Individual Pluggers (shown below top to bottom)</b>	
<b>Medium-Large Buchanan Plugger, .12 Taper</b>	<b>952-0007</b>
<b>Medium Buchanan Plugger, .10 Taper</b>	<b>952-0006</b>
<b>Fine-Medium Buchanan Plugger, .08 Taper</b>	<b>952-0005</b>
<b>Fine Buchanan Plugger, .06 Taper</b>	<b>952-0004</b>
<b>Extra-Fine Buchanan Plugger, .04 Taper</b>	<b>952-0031</b>



**BUCHANAN HAND PLUGGERS**

Featuring both a tapered nickel-titanium end and a stainless steel end, Buchanan Hand Pluggers can be used in any common obturation technique, including warm and cold condensation. The pluggers are also ideal for backfilling canals. Use the color-coded NiTi end for finishing off condensation procedures in even the most radically curved canals. Either end condenses and controls the movement of gutta percha under pressure. In addition, the Buchanan Hand Pluggers are fabricated of the highest grade materials for excellent durability and sterilization.

<b>Buchanan Hand Plugger, Size #0</b>	<b>974-0060</b>
<b>Buchanan Hand Plugger, Size #1</b>	<b>974-0058</b>
<b>Buchanan Hand Plugger, Size #2</b>	<b>974-0059</b>



**BUCHANAN HEAT PLUGGER TIP STAND**

Already a user-friendly, aesthetic, and secure organizer for your Buchanan Heat Pluggers, just flip down the stand and you're ready to autoclave. Holds up to six pluggers.

<b>Buchanan Heat Plugger Tip Stand</b>	<b>952-0017</b>
--	-----------------



**SYSTEM B™ HEAT SOURCE**

SybronEndo is the industry leader in endodontic heat carriers. The System B Heat Source provides clinicians with unequalled convenience, reliability, and accuracy. It allows you to dial in the exact temperature setting, which it maintains throughout the procedure. Simply set the temperature, and within 12 seconds, you have a superior apical seal and post space in a single motion. Backfill is just as easy. A sturdy cast-aluminum enclosure with carrying handle makes it easy to carry and place the System B wherever you want. The handpiece and cord assembly may be disconnected and autoclaved. With SybronEndo's rechargeable battery and charge adapter, you will get at least one hour of continuous operation. The System B also accepts SybronEndo's Touch 'n Heat tips.

<b>System B Heat Source, 110v</b>	<b>952-0001</b>
-----------------------------------	-----------------

**SYSTEM B ACCESSORIES**

<b>System B Charge Adapter, 110v*</b>	<b>973-0222</b>
<b>Handpiece Assembly for System B</b>	<b>952-0008</b>
<b>Pinwise Nut with Contact Spring*</b>	<b>973-0224</b>
<b>Small Pinwise Nut Only*</b>	<b>973-0245</b>
<b>Plastic Practice Blocks for System B</b>	<b>952-0024</b>
<b>Contact Clip (pkg of 2)*</b>	<b>951-0008</b>

\*Also used with Touch 'n Heat.

*The System B Heat Source drives the Continuous Wave Pluggers through root canal systems in less than four seconds, optimizing the hydraulic movement of sealer and gutta percha. This Centered Condensation Technique combines the apical accuracy of cone-fit techniques with the optimized 3D capabilities of warm gutta percha obturation, fewer instruments and without the challenge of creating post spaces.*

— L. Stephen Buchanan, DDS, FICD, FACD

**AUXILIARY GUTTA PERCHA**

Auxiliary Gutta Percha Points are readily softened by heat and flexible enough to be easily inserted into the canal.

AUXILIARY SIZES	Box of 100	6 Vials of 20
Xtra-Fine (XF)	12643	14376
Fine-Fine (FF)	13985	14377
Medium-Fine (MF)	13986	14378
Fine (F)	12644	14375
Fine-Medium (FM)	13987	14379
Medium (M)	12645	14380
Large (L)	12646 (PKG OF 50)	14381
Assorted Pack (XF, FF, MF, F, FM, M)	12647	14374

**STANDARDIZED GUTTA PERCHA**

Standardized Gutta Percha Points are sized to correspond to the dimensions of SybronEndo standardized endodontic instruments. They are readily softened by heat and flexible to be easily inserted into the canal.

STANDARDIZED SIZES	Box of 100	6 Vials of 20
No. 15	12648	14382
No. 20	12649	14383
No. 25	12650	14384
No. 30	12651	14385
No. 35	12652	14386
No. 40	12653	14387
No. 45	12654	14388
No. 50	12655	14389
No. 55	12656	14390
No. 60	12657	14391
No. 70	12658	14392
No. 80	12659	14393
No. 15-40 Assorted		14451
No. 45-80 Assorted		14452
No. 90-140 Assorted		14453



**TOUCH 'n HEAT™ 5004**

Designed by Dr. Herb Schilder, the Touch 'n Heat conveniently and consistently puts the heat on for warm gutta percha techniques. The patented autoclavable tips are internally heated so that the heat is concentrated at the end where it's needed most. Not only do you have a precisely heated tip to work with, you also can control its temperature. Say "goodbye" to old Bunsen burners and step up to the Touch 'n Heat today.

Touch 'n Heat 5004, 110v	973-0212
Pinvise Nut with Contact Spring*	973-0224
Small Pinvise Nut Only*	973-0245
Charge Adapter, 110 V*	973-0222
Contact Clip (pkg of 2)*	951-0008

\*Also used with System B.

**HEAT CARRIERS AND TIPS**

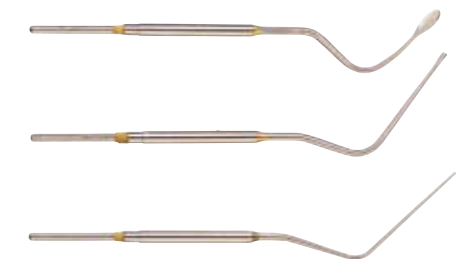
Standard Anterior Heat Carrier	973-0214
Standard Posterior Heat Carrier	973-0215
Narrow Anterior Heat Carrier	973-0216
Narrow Posterior Heat Carrier	973-0217



Hot Pulp Test Tip	973-0219
-------------------	----------



Spoon Tip	973-0218
Plugger, Thick Tip (1mm)	973-0220
Plugger, Thin Tip (.5mm)	973-0221





**ABSORBENT POINTS**

SybronEndo Absorbent Points are presterilized and highly absorbent. They are made to remove moisture from prepared canals and are rigid enough to be easily inserted and withdrawn while keeping a firmly rolled shape. SybronEndo Absorbent Points are sized to correspond with the dimensions of SybronEndo standardized endodontic instruments.

AUXILIARY SIZES	Box of 200	Cell Pack of 200
XX-Fine (XXF)		16215
X-Fine (XF)	13966	16216
Fine (F)	13967	16217
Medium (M)	13968	16218
Course (C)	13969	16219
X-Course (XC)	13970	16220
Assorted (XF, F, M, C)	13965	
Assorted (XF, F, M, C, XC)		16221
STANDARD SIZES	Box of 200	Cell Pack of 200
No. 80	13982	
No. 70	13981	
No. 60	13980	16231
No. 55	13979	16230
No. 50	13978	16229
No. 45	13977	16228
No. 40	13976	16227
No. 35	13975	16226
No. 30	13974	16225
No. 25	13973	16224
No. 20	13972	16223
No. 15	13971	16222

**FINGER PLUGGERS**

Standardized sizes with ISO taper were designed for vertical condensation.

STRETCH "B" HANDLE (pkg of 6)			
SIZE	21mm	25mm	HANDLE
45	15738	15745	White
40	15737	15744	Black
35	15736	15743	Green
30	15735	15742	Blue
25	15734	15741	Red
20	15733	15740	Yellow

**FINGER SPREADERS**

Tapered sizes are matched to SybronEndo Gutta Percha Points. Designed for lateral condensation.

STRETCH "B" HANDLE (pkg of 6)			
SIZE	21mm	25mm	HANDLE
M	15724	15731	Black
FM	15723	15730	Green
F	15722	15729	Blue
MF	15721	15728	Red
FF	15720	15727	Yellow
XF	15719	15726	White



**XPRESS SEALERS**

Two of SybronEndo's classic sealers now boast a new delivery method to help simplify setup, delivery and cleanup. Tubli-Seal and Tubli-Seal EWT are now available in automix syringes. These syringes offer easy mixing at your fingertips in a perfect 1:1 ratio without worry and without manual mixing. This innovative delivery adds efficiency, convenience and simplicity to a line of sealers that is already steadfast and dependable.

Tubli-Seal Xpress (2 - 10.7g syringes)	33640
Tubli-Seal EWT Xpress (2 - 10.8g syringes)	33641
50 mixing tips	33680



**TUBLI-SEAL™**

Tubli-Seal is a paste/paste zinc oxide eugenol root canal sealer. Tubli-Seal is light in color, nondarkening and radiopaque.

Tubli-Seal	00340
Bulk package contains:	01081
• 24 sets of base and accelerator	
• 6 mixing pads	
Mixing pads	28366



**SEALAPEX®**

Sealapex is the original non-eugenol, calcium hydroxide polymeric root canal sealer. This formulation produces rapid healing and hard tissue formation.

Sealapex	18432
Bulk package contains:	18598
• 24 sets of base and accelerator	
• 6 mixing pads	

**TUBLI-SEAL EWT**

Tubli-Seal EWT offers all of the benefits of Tubli-Seal with the added benefit of a longer working time.

Tubli-Seal EWT	25903
----------------	-------



**PULP CANAL SEALER™ EWT**

Pulp Canal Sealer EWT has the same physical properties of Pulp Canal Sealer and features a work time of greater than 6 hours on the pad.

Pulp Canal Sealer EWT	24746
Case Lot Powder Refill	24745
Case Lot Liquid Refill	24873



**PULP CANAL SEALER**

Pulp Canal Sealer is a zinc oxide eugenol sealer that has a powder base and liquid catalyst. It is a nontoxic and non-irritating formulation that is very radiopaque and has a long history of clinical success.

Pulp Canal Sealer	24875
Case Lot Powder Refill	24874
Case Lot Liquid Refill	24873



**OBTURA**

Obtura III*	972-0001
20-Gauge Needles (pkg of 6)	972-0004
23-Gauge Needles (pkg of 6)	972-0005
25-Gauge Needles (pkg of 6)	972-0057
Obtura Pellets (pkg of 100)*	972-0008
Cleaning Brushes	972-0006
Needle Lock Nuts (pkg of 2)	972-0009
Cleaning Solution	972-0012
Thermal Protectors	972-0013
Flow 150 Gutta Percha (pkg of 100)	972-0060
AC Adaptor, 12 VDC	972-0061
Multi Tool	972-0063
Obtura III Thermal Protect, 10 ea	972-0065

\*Limited European distribution.



**MICROSEAL® CONDENSERS**

The engine-driven nickel-titanium condensers have a reverse-helix design that simultaneously introduces and condenses gutta percha into the intricacies of the canal system

**MICROSEAL CONDENSERS, .02 (pkg of 5)**

25/21mm	815-7101	25/25mm	815-7501
30/21mm	815-7102	30/25mm	815-7502
35/21mm	815-7103	35/25mm	815-7503
60/21mm	815-7104	60/25mm	815-7504

**PACMAC™ CONDENSERS, .04 (pkg of 5)**

25/21mm	815-7131	25/25mm	815-7531
45/21mm	815-7132	45/25mm	815-7532
55/21mm	815-7133	55/25mm	815-7533
Asstd 21mm	815-7221	Asstd 25mm	815-7225



**OBTURATION CONTRA-ANGLE**

Mini-Spring Head 1:1

815-9088



**MICROFLOW™ SYRINGE**

Autoclavable heavy-duty metal construction with large finger supports for easy extrusion of Microflow Cartridges.

Microflow Syringe **815-9047**

**MICROFLOW CARTRIDGES**

Prefilled with ultra-low-fusing gutta percha, Microflow Cartridges allow for even heat distribution and provide consistent, reliable results. Microflow is designed to unify with master cone to form one, homogenous mass of gutta percha. Its tacky consistency allows for thorough adhesion to canal walls.

Microflow Cartridges (pkg of 10) **815-9045**

**NOUVAG TCM ENDO III**

TCM Endo III, 110v **815-9113**  
 TCM Endo III, 220v **815-9114**  
 (Does not include handpiece)



**MICROSEAL MICROFLOW MASTER CONES**

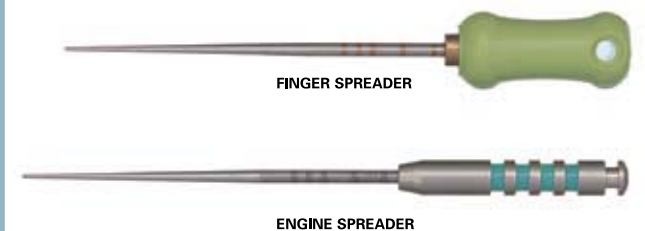
ISO standard gutta percha directly matches the ISO standard-sized files, meaning the taper is 2% or .02 taper all the way up the gutta percha cone. ISO gutta percha is ideal for MicroSeal or cold lateral condensation.

**MICROSEAL MASTER CONE**  
 PKG OF 50

Taper	Tip	
.02	25	815-9032
.02	30	815-9034
.02	35	815-9035
.02	40	815-9036
.02	45	815-9037
.02	50	815-9038
.02	55	815-9039
.02	60	815-9040
.04	25	815-9033

**MICROSEAL ISO PAPER POINTS**  
 PKG OF 100

Taper	Tip	
.02	25	815-9001
.04	25	815-9002



FINGER SPREADER

ENGINE SPREADER

**MICROSEAL® SPREADERS**

Nickel-titanium finger or engine spreaders enable even distribution of condensation forces against the master cone, even around curvatures.

**ENGINE SPREADERS (pkg of 5)**

25/.04 21mm	815-6101
20/.02 25mm	815-6502
25/.02 25mm	815-6503
25/.04 25mm	815-6501

**FINGER SPREADERS (pkg of 5)**

20/.02 25mm	815-6522
25/.02 25mm	815-6523
25/.04 25mm	815-6521

Whether performing precision microsurgery, troughing around a post or simply agitating sodium hypochlorite within the canal, SybronEndo can satisfy your ultrasonic needs. The SybronEndo ultrasonic line has what you need to get the job done.

## ULTRASONICS

MINIENDO II	56
<b>NEW</b> ▶ REDSTAR TIPS	57
SPREADER TIPS	58
THE "4" SERIES	58
BUC TIPS	59
CPR TIPS	59
SPECIALTY TIPS	59
CT TIPS	60
UT TIPS	60
SJ TIPS	60
BK3 TIPS	60
DIAMOND-COATED TIPS	61
KIS TIPS	61

# ULTRASONICS



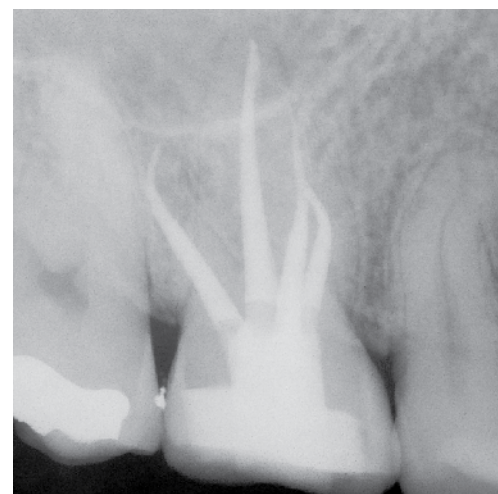
SEE OUR NEW REDSTAR TIPS ▶ PAGE 57.



# Sleek. Compact. Powerful.

The MiniEndo II is a sleek, compact ultrasonic unit designed specifically for endodontic applications and to deliver just the right amount of power and amplitude at the tip to successfully complete endodontic procedures.

<b>MINIENDO II ULTRASONIC UNIT</b>	
MiniEndo II Ultrasonic Unit Type S, 110v	973-0236
<b>ACCESSORIES</b>	
Wrench for Ultrasonic Tips	973-0096
MiniEndo Handpiece (M3x.6) Type S	973-0201



MB2 canal located by the planing motion of the Red Star RS-2 tip.

*From vibrating posts to removing separated instruments and everything in between, RedStar Tips provide powerful yet safe tactile control of ultrasonic energy.*

— Richard Mounce, DDS,  
Vancouver, Washington



### REDSTAR TIPS

RedStar Tips are innovative in ultrasonics. These tips provide a wide range of functionality and efficiency and are intended for use by both the novice clinician and the expert specialist. Developed in collaboration with Dr. Richard Mounce, these tips are designed with safety in mind first and will enable the clinician to handle various endodontic cases.



#### RedStar-1 Spreader Tip

- Helps remove cement around posts
- Opens calcified canals
- Removes isthmus tissue between canals

REDSTAR-1 SPREADER TIP 973-1040



#### RedStar-2 Planing Tip

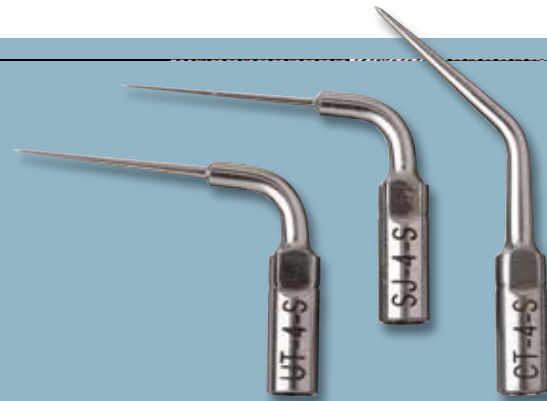
- Removes pulp stones smoothly and safely from pulp chamber without scoring
- Smooths the axial walls and floor of the pulp chamber
- Shaves thin layers of dentin without cutting too deep

REDSTAR-2 PLANING TIP 973-1041

**ULTRASONIC TIP INTRODUCTORY KIT**

SybronEndo's Starter Tip Kit is the perfect entry for those starting to recognize the benefits ultrasonics can provide for their office. Each kit contains one: SP-2, Scaler, CT-4 and Diamond-Coated CT-4.

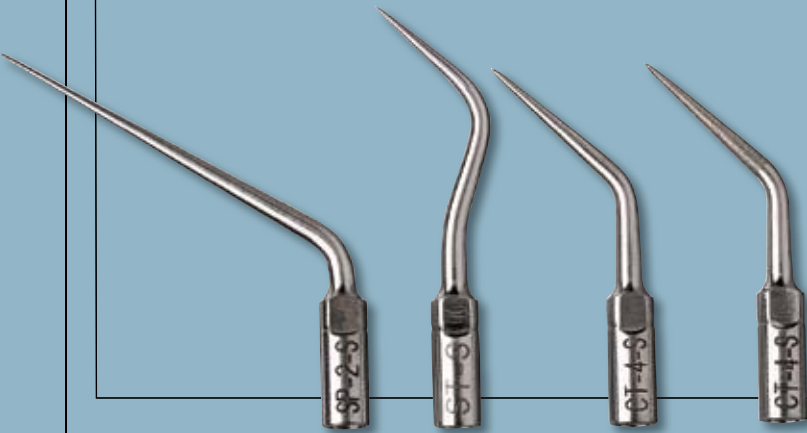
Ultrasonic Tip Introductory Kit 973-1000



**THE "4" SERIES™**

The "4" series is geared for troughing around posts and opening calcified canals. SybronEndo recommends that the clinician begin at level one and increase according to his personal comfort level.

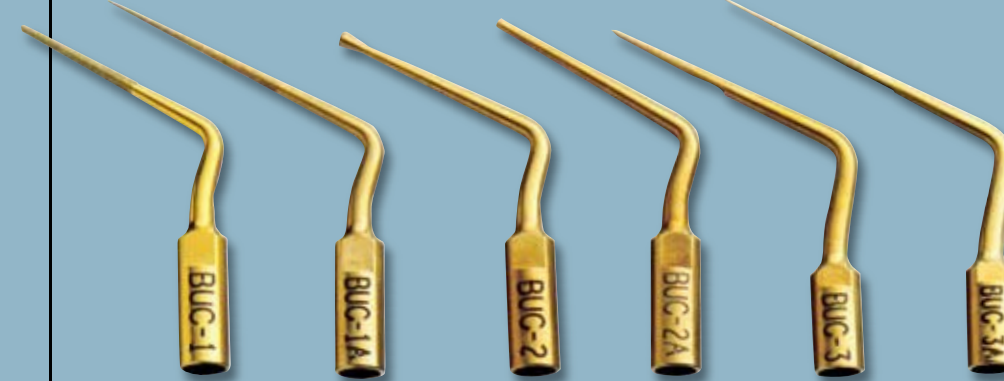
UT-4	973-0039
SJ-4	973-0041
CT-4	973-0057



**SPREADER TIPS**

Longer than our "4" series, Spreader Tips are designed for troughing within the canal. Spreader Tips can trough around posts or break open a calcification, but also can be used to help retrieve separated files that are stuck in the apical third of the canal.

SP-1 Small Spreader Tip	973-0063
SP-2 Medium Spreader Tip	973-0065
SP-3 Ultra-Fine Spreader Tip	973-0067



BUC-1	973-0401
BUC-1A	973-0406
BUC-2	973-0402
BUC-2A	973-0403
BUC-3	973-0404
BUC-3A	973-0407
BUC (set of 6 tips)	973-0405

Limited European distribution.

**BUC-1 AND BUC-1A**

The BUC-1 can be used for gross dentin removal, moving access line angles, cutting a groove in the mesial access wall to drop into MB2 canals, and for quickly and carefully unroofing pulp chambers. Its radiused tip geometry also allows effortless entry into each canal orifice and facilitates the creation of a smoothly troughed surface, which is helpful in finding reclusive MB2s. Use at power level 1-3.

**BUC-2 AND BUC-2A**

The BUC-2, with its disk-like radiused tip, can be used to smoothly and safely plane attached pulp stones from the pulp chamber floor without scoring it. In molars, it can be used to

horizontally smooth the pulp chamber floor without cutting past it to get to the darker colored dentin. The smaller version BUC-2A has a 1.0mm diameter and can be used for corners of molar access prep and bicuspid access prep.

**BUC-3 AND BUC-3A**

The BUC-3 is an extremely active instrument with a sharp tip. It is used for chasing canals halfway up a root or for digging around a post or carrier-based obturator to remove it. It has a water port placed near the cutting surface of the tip for increased washing and cooling of the operative site.

**SPECIALTY TIPS**

ST 973-0074

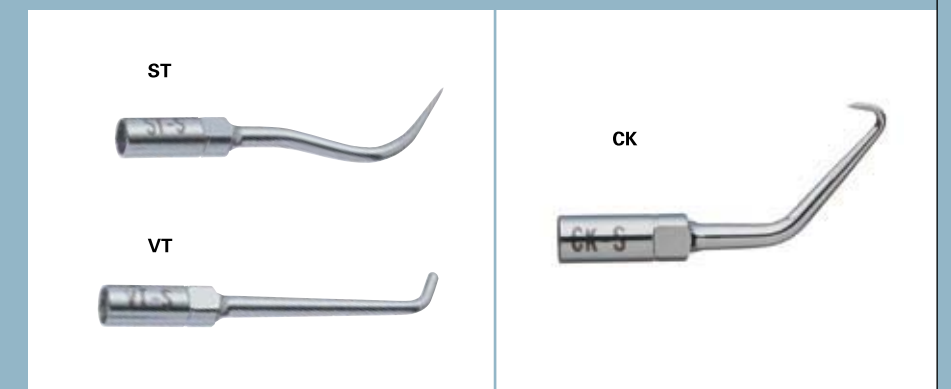
Scaler tip used to break away cement or calculus. The ST-1 is similar to the CT-4 except for its curvature for better access in difficult-to-reach areas within the tooth structure.

VT 973-0069

The vibrator tip is designed to vibrate a post out, vibrate a crown or bridge off or help seat a crown.

CK (Carr-Kanter Back-Action Ultrasonic Tip) 973-0061

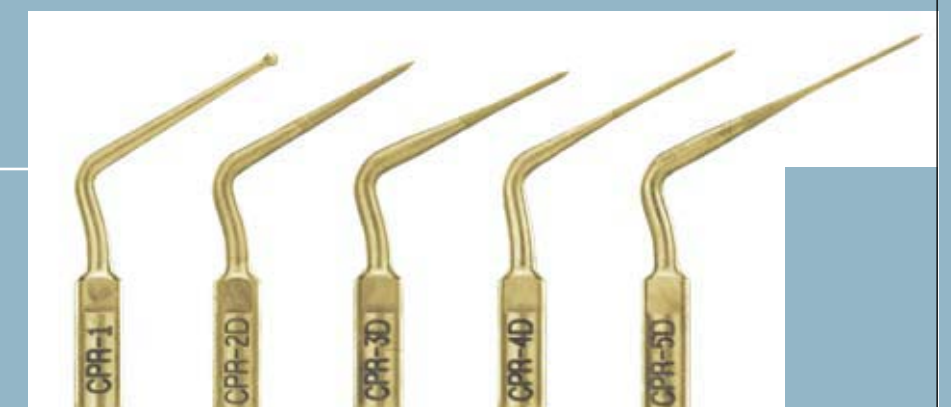
Used to reach tough areas such as MB2 canals.



**CPR TIPS**

CPR-1	973-1031	CPR set of 5 (1-5)	973-1030
CPR-2D	973-1032	CPR-6	973-1011
CPR-3D	973-1033	CPR-7	973-1012
CPR-4D	973-1034	CPR-8	973-1013
CPR-5D	973-1035	CPR set of 3 (6-8)	973-1010
		(not shown)	

Limited European distribution.



SURGICAL ULTRASONIC TIPS

**CT TIPS™**

Our surgical tips, designed by Gary Carr, include CT, UT and SJ sets. Surgery is initiated with the “1” tip and followed by the “2” or “3,” depending on tooth position.

<b>Strength:</b>	High
<b>Tips:</b>	Somewhat bulky, used in wide preps
<b>Visibility:</b>	Moderate
<b>Water port:</b>	Yes

**CT-1 Initiating Tip** 973-0059  
Straight-line tip with 90° angle used to initiate the preparation.

**CT-2 Main Right Tip** 973-0053  
Angled tip for use on upper right and lower left to complete the prep.

**CT-3 Main Left Tip** 973-0055  
Angled tip for use on upper left and lower right to complete prep.



**FILE ADAPTOR**

The File Adaptor, used with NiTi blanks or K-Files (sizes 15-35) without a handle, can be inserted into the chuck. It activates irrigant in the canal, thereby increasing the effect of irrigation by acoustic streaming.

**File Adapter** 973-0031



**DIAMOND-COATED ULTRASONIC TIPS**

Our most popular Ultrasonic Tips are now also available with a diamond coating, improving their cutting efficiency and durability.

<b>CT-4 Straight-Line Tip (our most popular)</b>	973-1057
<b>CT-1 Initiating Tip</b>	973-1059
<b>CT-2 Right Tip</b>	973-1053
<b>CT-3 Left Tip</b>	973-1054
<b>UT-4 Straight-Line Tip</b>	973-1039
<b>CK Carr-Kanter Back-Action Tip</b>	973-1060
<b>SP-2 Medium Spreader Tip</b>	973-1065
<b>BK3-R Upper Right/Lower Left Tip</b>	973-1110
<b>BK3-L Upper Left/Lower Right Tip</b>	973-1111



**UT TIPS**

<b>Strength:</b>	Moderate
<b>Tips:</b>	Moderate size, can access most areas
<b>Visibility:</b>	Good
<b>Water port:</b>	Yes

**UT-1 Initiating Tip** 973-0033  
Straight-line tip with 90° angle used to initiate the preparation.

**UT-2 Universal Right tip** 973-0035  
Angled tip for use on upper right and lower left to complete the prep.

**UT-3 Universal Left tip** 973-0037  
Angled tip for use on upper left and lower right to complete the prep.



**SJ TIPS™**

<b>Strength:</b>	Delicate
<b>Tips:</b>	Very fine, used for fine preps
<b>Visibility:</b>	Excellent
<b>Water port:</b>	Yes

**SJ-1 Initiating Tip** 973-0084  
Straight-line tip with 90° angle used to initiate the preparation.

**SJ-2 Slim Jim Right Tip** 973-0078  
Angled tip for use on upper right and lower left to complete the prep.

**SJ-3 Slim Jim Left Tip** 973-0080  
Angled tip for use on upper left and lower right to complete the prep.



**BK-3 TIPS**

Our BK-3 surgical tips have three bends for easy access to any preparation, including MB2 canals. BK-3s provide excellent visibility and can finish an entire prep with one tip. Water is directed down the three bends and is able to reach the surgical site. BK-3s are for use with any application.

**BK-3 Right (upper right, lower left)** 973-0110  
**BK-3 Left (upper left, lower right)** 973-0112

**KiS TIPS**

The KiS microsurgical ultrasonic instruments are designed for use in endodontic microsurgery and offer dramatically increased cutting efficiency due to their diamond coating. The dentin surface is left smooth, yet microscopically rough, which results in better adaptation of filling materials, fewer microfractures and less leakage. The longer shafts and increased angles give the clinician improved access and the strategically placed irrigation port affords more precise control of irrigation.



<b>KiS-1D</b> Angled 80° at the working end, this instrument is a general purpose tip for use on anterior and posterior areas – 0.5 mm diameter x 3.0 mm cutting surface.	973-1021
<b>KiS-2D</b> Similar to the KiS-1D, this instrument is for larger diameter roots – 0.7 mm diameter x 3.0 mm cutting surface.	973-1022
<b>KiS-3D</b> This double-angled 75° instrument is for use on the buccal root of the mandibular right molar and mesial buccal of the maxillary left molar – 0.5 mm diameter x 3.0 mm cutting surface.	973-1023
<b>KiS-4D</b> This double-angled 110° instrument is for use on the lingual root of the mandibular left molar and distal buccal of the maxillary right molar – 0.5 mm diameter x 3.0 mm cutting surface.	973-1024
<b>KiS-5D</b> A mirror image of the KiS-3D, this instrument is for use on the buccal roots of the mandibular left molar and mesial buccal of the maxillary right molar – 0.5 mm diameter x 3.0 mm cutting surface.	973-1025
<b>KiS-6D</b> A mirror image of the KiS-4D, this instrument is for use on lingual roots of the mandibular right molar and distal buccal of the maxillary left molar – 0.5 mm diameter x 3.0 mm cutting surface.	973-1026
<b>KiS set of 6</b> The set includes KiS-1D, KiS-2D, KiS-3D, KiS-4D, KiS-5D and KiS-6D.	973-1020

Limited European distribution.



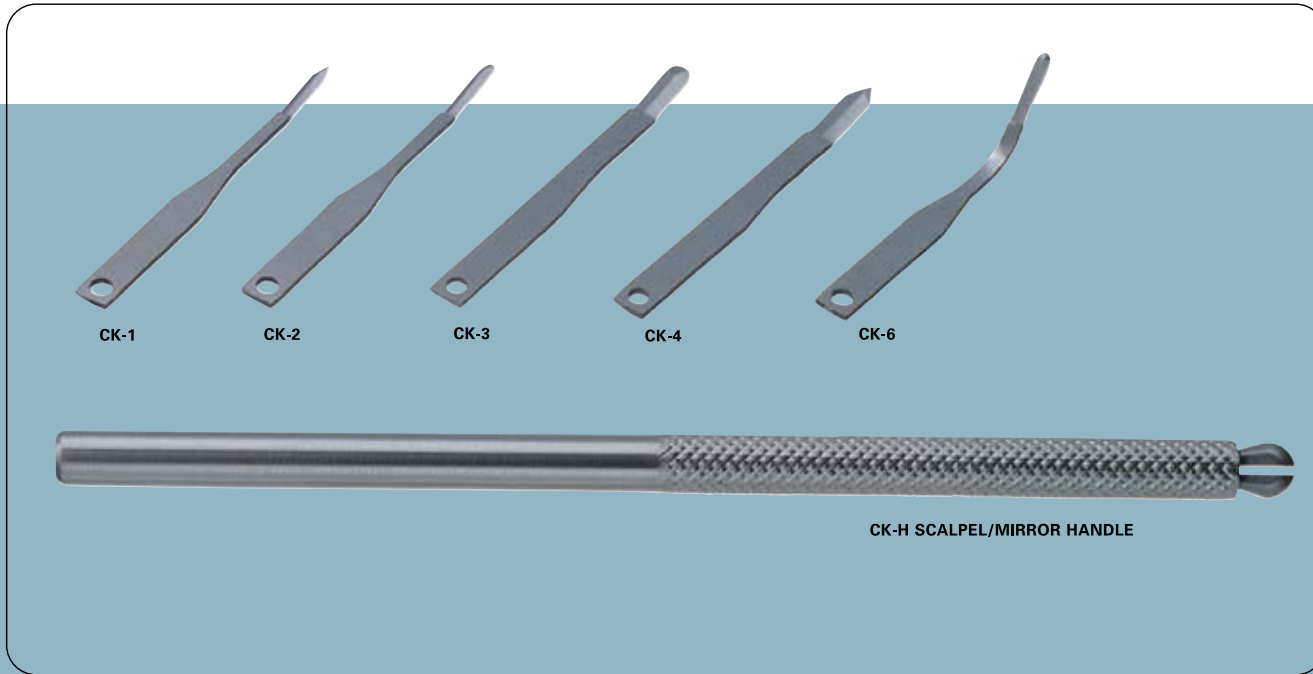
Take it from the experts – SybronEndo’s microsurgical line has been developed by endodontists for the unique needs of endodontic surgery. See how their expertise can better facilitate your surgical procedures.

**MICROSURGERY**

# MICRO SURGERY

SCALPELS	64
MICROSURGICAL SUCTION	64
STROPKO IRRIGATOR	65
CURETTES	66
RETRACTORS	67
MIRRORS	67
IMPACT AIR HANDPIECES	68
EXPLORERS	68
PLUGGERS AND CONDENSERS	69
SUTURES	70
NEEDLE HOLDER	71
TWEEZERS	71
SCISSORS	71
FORCEPS	71

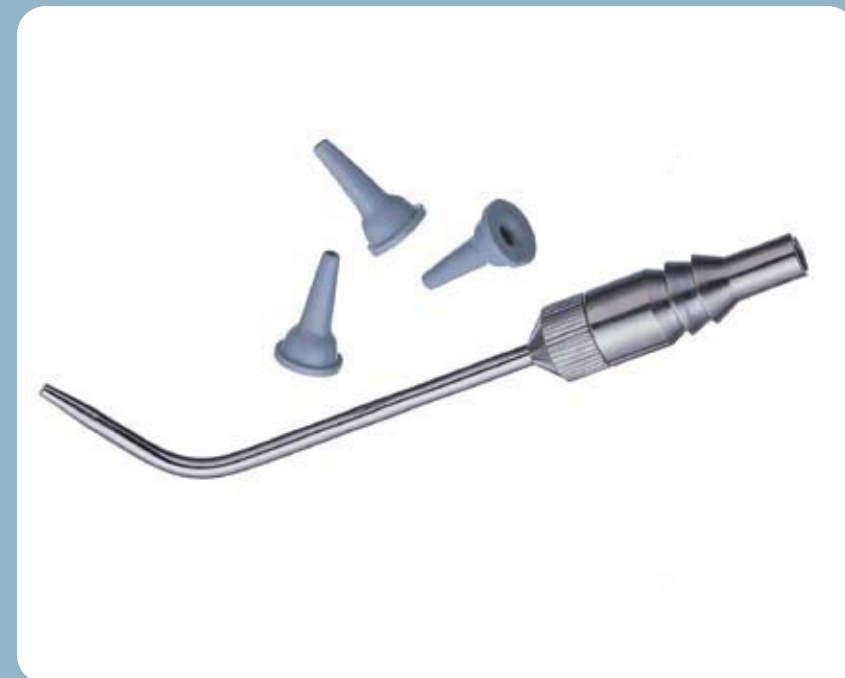




**SCALPELS**

Specially designed for endodontic use, SybronEndo's disposable scalpels improve visibility under a microscope, allowing a more precise incision. The scalpels are double-edged and curved to conform to all areas of the mouth. All scalpels come in a pack of three heads only. Scalpels, mirrors, and handles are interchangeable and available separately.

<b>CK-1 Small Spear-Point Scalpel</b> For buccogingival incisions	975-0009
<b>CK-2 Small Full-Radius Scalpel</b> For all indications	975-0010
<b>CK-3 Large Full-Radius Scalpel</b> For all indications	975-0011
<b>CK-4 Large 10° Spear-Point Scalpel</b> For mucogingival incisions	975-0012
<b>CK-6 Small 60° Full-Radius Scalpel</b> For Palatal incisions	975-0014
<b>CK-H Scalpel/Mirror Handle</b>	975-0015
<b>CM-H Scalpel/Mirror Handle – Long</b>	979-0009



**MICROSURGICAL SUCTION**

Provides efficient aspiration in difficult surgical sites.

<b>Microsurgical Suction Tube – Small</b>	975-0044
<b>Rubber Suction Tips (pkg of 50)</b>	975-0047

**THE STROPKO IRRIGATOR HAS MULTI-DISCIPLINARY USES**

**ENDODONTICS**

- Rinse and dry precisely for unsurpassed vision during every procedure
- Clear away dentinal dust while retrieving broken instruments
- Control vision of site while troughing to locate hidden canals in all molars
- Clean and dry root-end preparations when performing microsurgical procedures
- Rinse and dry area after staining root-end preparation for improved seal
- Air-dry the canal system with a light touch of air prior to obturation for improved seal

**RESTORATIVE**

- Direct a precise and controlled flow of air or water into any area
- Be confident of surface management in micro-adhesive dentistry
- Clean and dry sulcus during tissue retraction prior to impressions
- Use gentle air flow to “thin” resin for total light cure during placement in deep areas
- Rinse completely and have positive drying of area in all bonding procedures

**SURGERY**

- Gently flush any area for vision and avoid splashing or inadvertent contamination

**STROPKO IRRIGATOR**

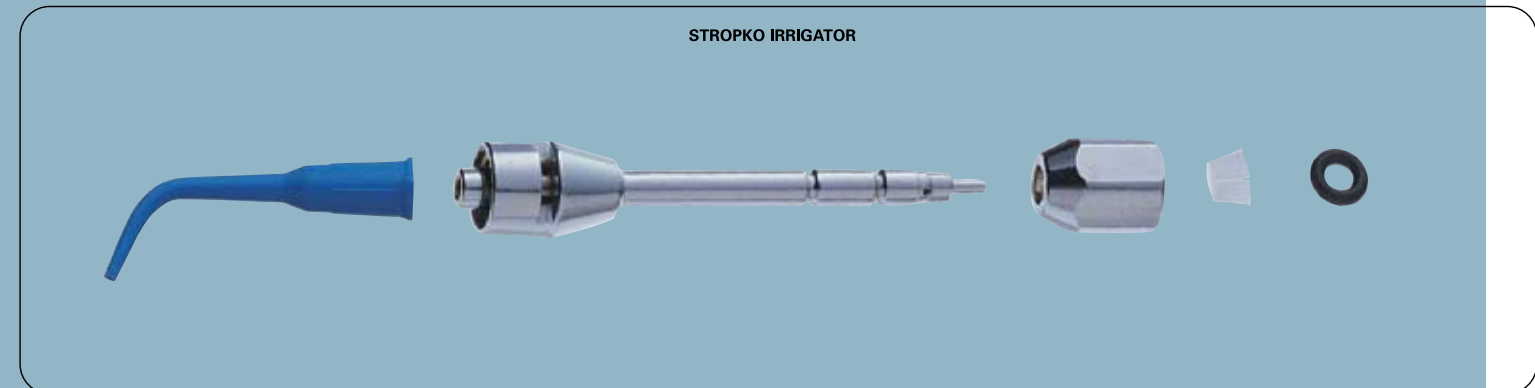
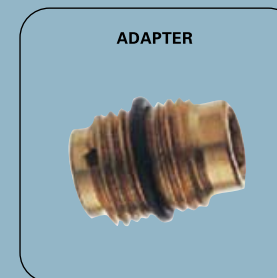
The Stropko Irrigator places the perfect amount of air and water pressure into the field. Its small, luer-lock tips do not impede visibility during irrigation or drying and are excellent for use under the microscope. Fits most Triplex air/water syringes.

<b>Stropko Irrigator</b>	975-0039
<b>Stropko Blue Irrigation Tips</b>	975-0120

**ADAPTER**

Most units accommodate the Stropko without the use of an adapter. For old Adec units or Triplex syringes, an adapter may be needed to accommodate the Stropko. The adapter will modify a female-type syringe head into a male screw-type syringe. The thread measurements on the adapter are 5/16 – 32.

<b>Adapter</b>	975-0040
----------------	----------





**CURETTES**

SybronEndo currettes are extremely sharp and able to cut through attaching fibers with the efficiency of a scalpel. This allows the skilled clinician to provide patients with the shortest recovery time possible. All currettes are autoclavable and manufactured from only the highest-grade surgical stainless steel.

Ruddle Currettes are used to make a sharp dissection of the periosteal tissue, thus preventing tissue damage. They allow for undermining elevation of the flap, which along with the micro-surgical incision are the first two steps in automatic flap management.

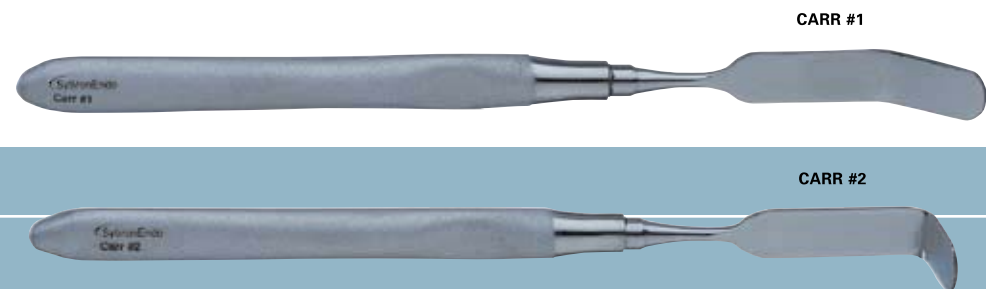
- Ruddle Upper Left/Lower Right Curette** 974-0033  
Round ends used to cut and elevate gingival tissue.
- Ruddle Upper Right/Lower Left Curette** 974-0034  
Round ends used to cut and elevate gingival tissue.
- Mini Ruddle Upper Left/Lower Right Curette** 974-0035  
Small squared ends used to cut and elevate gingival tissue.
- Mini Ruddle Upper Right/Lower Left Curette** 974-0036  
Small squared ends used to cut and elevate gingival tissue.

The Molt 2-4 is used for elevation of the tissue once the incision is made.

- Molt 2-4 Elevating Curette** 974-0037  
Rounded ends with no angle are used to cut and elevate tissue.

Jaquettes are double-ended and used to curette pathological lesions from the surface of the root. They are especially useful when the bony access is small or when tissue needs to be curetted from lingual recesses.

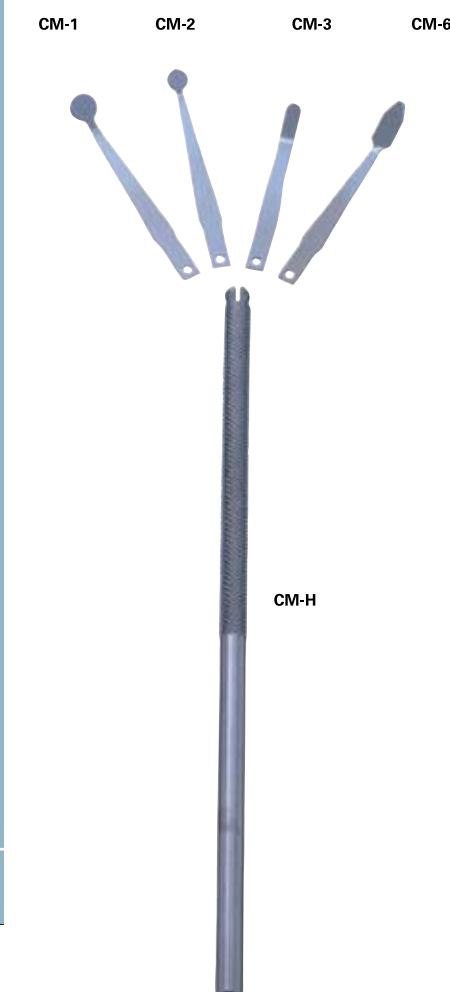
- Jacquette Curette** 974-0038  
Sharp Curette used to spoon out lesion.
- Mini Jacquette Curette** 974-0039  
Sharp Curette used to spoon out lesion.



**RETRACTORS**

SybronEndo Retractors are designed specifically for apical surgery. Our retractors reduce slippage and minimize tissue impingement. With oversized handles, abraded surfaces, and thumb-support detentes, SybronEndo retractors are both ergonomic and clinically superior. The Carr Retractors have a serrated edge that can easily rest in a groove created by the doctor. This takes pressure off of an assistant who holds back the flap and reduces the occurrence of slippage on the bone.

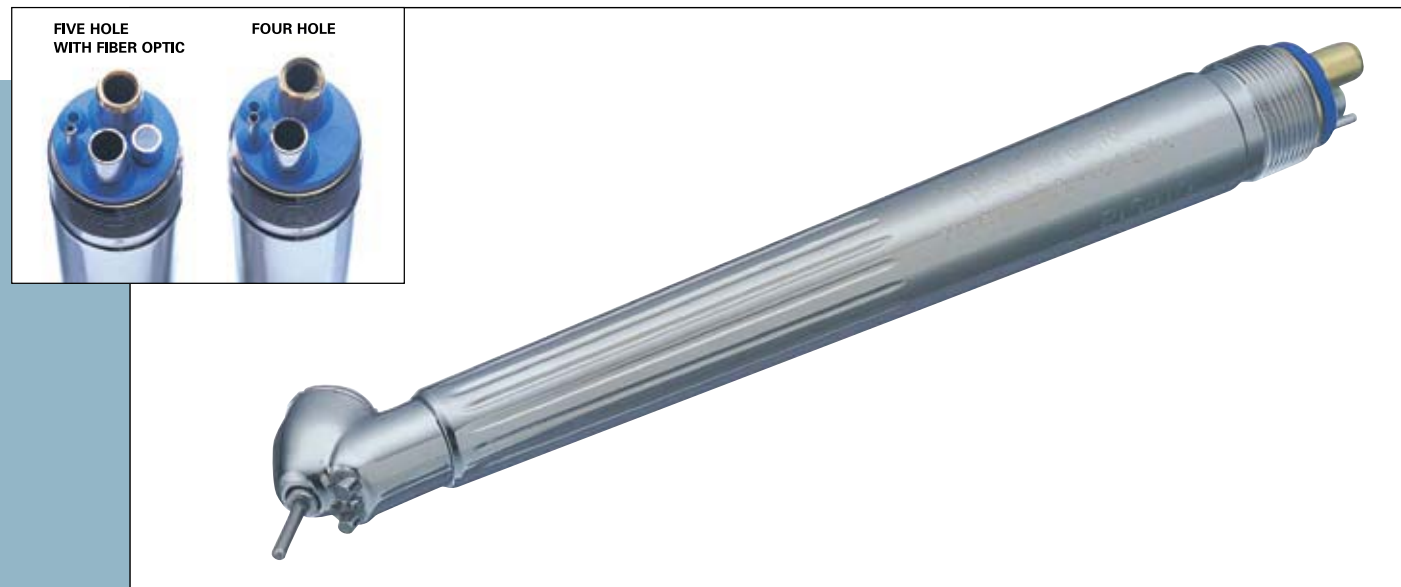
- Carr #1 45° Retractor** 974-0030  
Serrated edge for posterior applications
- Carr #2 90° Retractor** 974-0031  
Serrated edge for anterior applications



**MIRRORS**

It is essential in microsurgery to see not only through the microscope but also into small spaces like the bony crypt. Conventional dental mirrors cannot access the areas created in microsurgery. SybronEndo's stainless steel mirrors are durable and autoclavable. The semi-flexible heads and small surface areas allow greatly improved access to the surgical site. Multiple shapes and sizes are available for various access holes. Mirrors, scalpels and handles are interchangeable and sold separately.

- CM-R Mirror Set** 979-0010  
1 each CM-1, CM-2, CM-3 with regular handles
- CM-1 5mm Round** 979-0001  
1 mirror head only
- CM-2 3mm Round** 979-0002  
1 mirror head only
- CM-3 Medium Oval** 979-0004  
1 mirror head only
- CM-6 Large Oval** 979-0008  
1 mirror head only
- CM-H Long Scalpel/Mirror** 979-0009  
1 handle only
- CK-H Scalpel/Mirror Handle** 975-0015  
1 handle only



**IMPACT AIR HANDPIECES**

The Impact Air handpiece is an essential tool in every endodontic office. Its head was designed for the sterile conditions of implant surgery and does not exhaust air, reducing the risk of an air embolism and maintaining sterility in the surgical field. The Impact Air is ideal for bony access, as well as root resectioning. Its 45° angled head allows maximum visibility and is ideal for accessing tight spaces during endodontic surgery.

The high-speed Impact Air Handpiece accepts “friction-grip” burs with effortless bur insertion and removal. It is available in a four-hole version without fiber optics, and a five-hole version with fiber optics.

- Impact Air Five-Hole w/Fiber Optic\*** 977-0002
- Impact Air Four-Hole** 977-0001

\*For sale only in the USA.

**EXPLORERS**

SybronEndo has developed our Explorers with the clinicians unique endodontic needs in mind.

The extremely sharp and durable Carr Explorer is used to create an initial tracking groove by hand.

- CX-1 Carr Explorer** 974-0040

The Endo Explorer is the classic explorer used to locate canals.

- DG-16 Endo Explorer** 974-0041



**PLUGGERS AND CONDENSERS**

SybronEndo carries several condensers designed to assist the clinician to insert retro-fill material into a retro-prep. The unique angles offered on the condensers fit most any preparation. All condensers are autoclavable and manufactured from only the highest-grade surgical stainless steel.

- P-1 Double-Ended Plugger (90° Angle)** 974-0005  
For small anterior preparations.

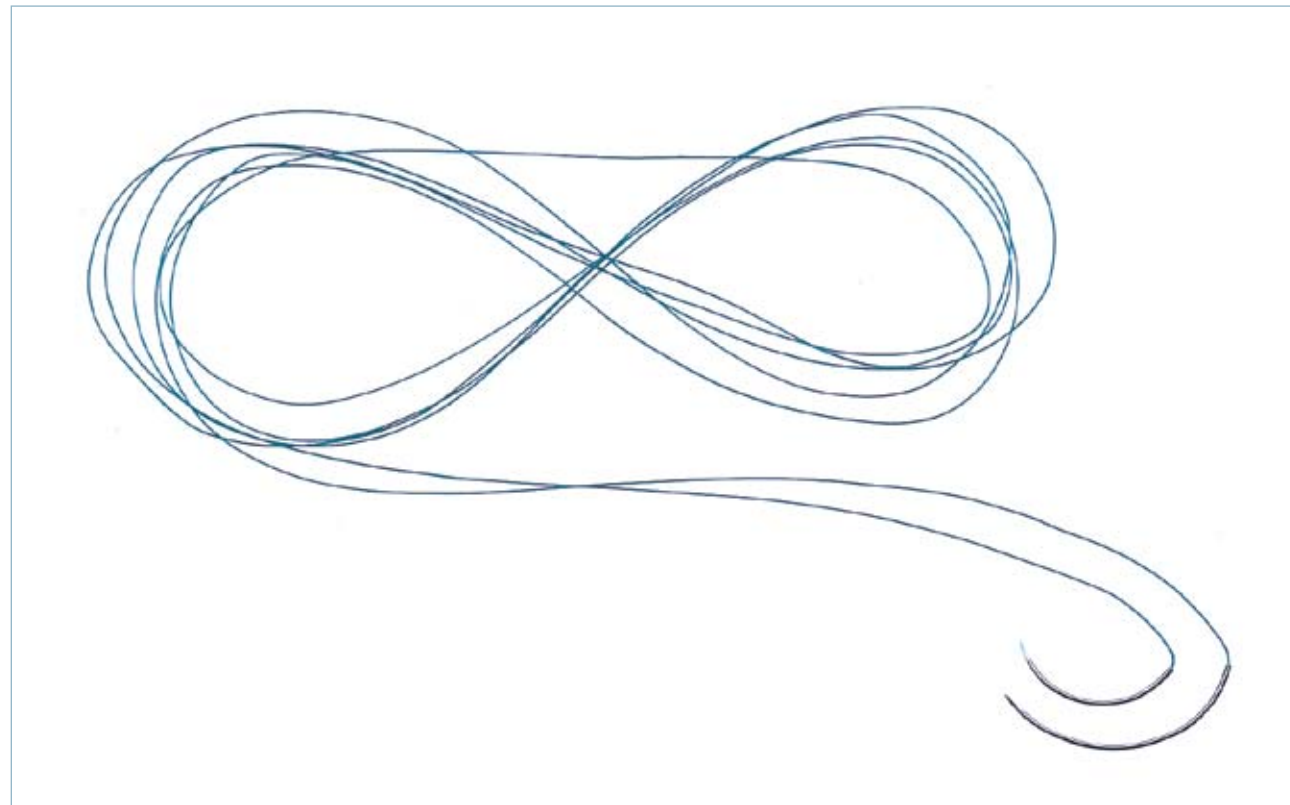
- P-1L Large Double-Ended Plugger (90° Angle)** 974-0006  
For small anterior applications.

- B-2R Buchanan Condenser (Right Angle)** 974-0001  
Angled for upper left or lower right with ball burnisher on opposite side.

- B-2L Buchanan Condenser (Left Angle)** 974-0002  
Angled for upper right or lower left with ball burnisher on opposite side.

- B-3 Buchanan Condenser (90° Angle)** 974-0003  
Angled for anteriors with ball burnisher on opposite side.





**SUTURES**

Originally designated for cardiac surgery due to their strength and low friction while moving through tissue. These sutures are ideal for endodontics with their minimal tissue trauma. The Tevdek sutures, which are 1/3 stronger than silk, are coated and impregnated with Teflon®. The non-stick surface means less bacteria adhesion, which accelerates the healing process and allows for early suture removal. Great handling qualities allow for knots that are easily tied and very secure. Our KT needles are scalpel-sharp and create an incision hole rather than a triangular hole in order to be less traumatic to the patient.

**NEEDLES**

Our sterile KT needles come in 2 sizes. The KT-1 is smaller for subgingival areas while the KT-2 is larger for the interproximal region (12 per pack).

Needle Type	Arms	Needle Length	Suture Length	Diameter (French sizing)	Needle Arc	Part Number
KT-2	Single	17.8mm	18"	4/0	3/8	975-0050
KT-1	Single	12.1mm	18"	5/0	3/8	975-0052
KT-2	Single	17.8mm	18"	5/0	3/8	975-0054
KT-1	Single	12.1mm	18"	6/0	3/8	975-0056

**CARR SUTURES**

Needle Type	Arms	Needle Length	Suture Length	Diameter (French sizing)	Needle Arc	Part Number
KT-1/KT-2	Double	12.1/17.8mm	36"	4/0	3/8	975-0063
KT-1/KT-2	Double	12.1/17.8mm	36"	5/0	3/8	975-0065
KT-1/KT-2	Double	12.1/17.8mm	36"	6/0	3/8	975-0067

\*Teflon is a registered trademark of DuPont.



CASTROVIEJO NEEDLE HOLDER

**TWEEZERS, FORCEPS, SCISSORS AND NEEDLE HOLDERS**

Our popular Castroviejo is a delicate instrument used to hold fine needles such as 5/0 & 6/0 during suturing. Easy to maneuver and lock.

**Castroviejo Needle Holder** 975-0006

Basic straight tweezers used to grab anything from gutta percha to cotton rolls.

**Microsurgical Tweezers – Straight** 975-0002

Our Microsurgical Scissors are a necessity for many applications, including cutting sutures.

**Microsurgical Scissors – Curved** 975-0007  
**Microsurgical Scissors – Straight** 975-0008

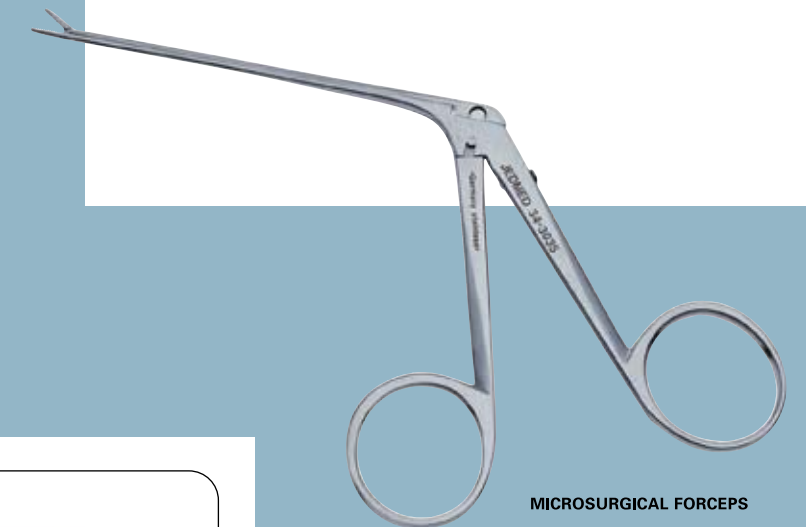
Long-necked, short-beaked forceps used to retrieve small objects from tight areas such as separated instruments deep into the canal.

**Microsurgical Forceps** 975-0001



MICROSURGICAL TWEEZERS STRAIGHT

MICROSURGICAL SCISSORS



MICROSURGICAL FORCEPS

## RETREAT & RESTORE

SybronEndo has several innovative instruments to assist you with a retreat case. Combining patient comfort with rapid, predictable results, we believe these systems are the best on the market today.

RUDDLE POST REMOVAL SYSTEM AND ACCESSORIES	74
PERFORATION REPAIR	74
PEERLESS POST	75

# RETREAT & RESTORE



**RUDDLE POST REMOVAL SYSTEM™**

The Ruddle Post Removal System was designed by Dr. Clifford Ruddle to get out of sticky situations without root or tooth damage. The Post Removal System features 5 trephine sizes with matching taps that literally put the grip on the post. Once the threads have been created, the removal plier completes the job. The Ruddle System is designed to fully engage and remove even the most intransigent post while preserving surrounding dentition.

**Ruddle Post Removal System** 977-0030

**RUDDLE POST REMOVAL SYSTEM REPLACEMENT PARTS**

**Ruddle Remover Tool** 977-0031

**Post Removal Domer Bur** 977-0032

**Post Removal Trephine #1** 977-0033

**Post Removal Trephine #2** 977-0034

**Post Removal Trephine #3** 977-0035

**Post Removal Trephine #4** 977-0036

**Post Removal Trephine #5** 977-0037

**Post Removal Tap #1** 977-0038

**Post Removal Tap #2** 977-0039

**Post Removal Tap #3** 977-0040

**Post Removal Tap #4** 977-0041

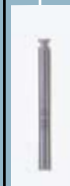
**Post Removal Tap #5** 977-0042

**Post Removal Torque Pin** 977-0043

**Post Removal Silicon Cushion Assortment** 977-0044

**Post Removal System Sterilizing Tray** 977-0047

**Post Removal System Box** 977-0048



**WEST PERFORATION REPAIR**

West Perforation Repair instruments are ideal for an incident in the upper third of the canal. Because the ends are paddle-like, they serve well as a carrier for both barrier and repair material. The paddles are flexible enough to allow placement of material flush with the canal wall.

**W1-2 West Perforation Repair** 974-0020  
Large paddle for coronal 1/3 repair

**W3-4 West Perforation Repair** 974-0021  
Small paddle for coronal 1/3 repair and mid-root repair



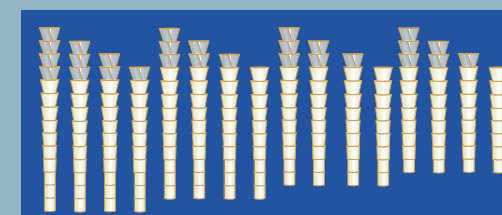
**PEERLESSPOST™**

PeerlessPost is a fully customizable fiber post. Adjustable on both ends, PeerlessPost provides a custom fit that is both esthetic and radiopaque.

- PeerlessPost has unique "keystone" links that are proven more retentive than other popular posts.\*
- PeerlessPosts exhibit a low elastic modulus similar to that of dentin, thereby decreasing the risk of root fractures.

\*Data on file, SybronEndo.

**FOUR POSTS = SIXTY-FOUR OPTIONS**



Each post has three 1 mm apical segments and four 1 mm coronal "keystone" segments that can be trimmed to custom fit each tooth for maximum contact and dentin conservation.\* With four PeerlessPost sizes available – each providing 16 options – you can choose among 64 different configuration possibilities.



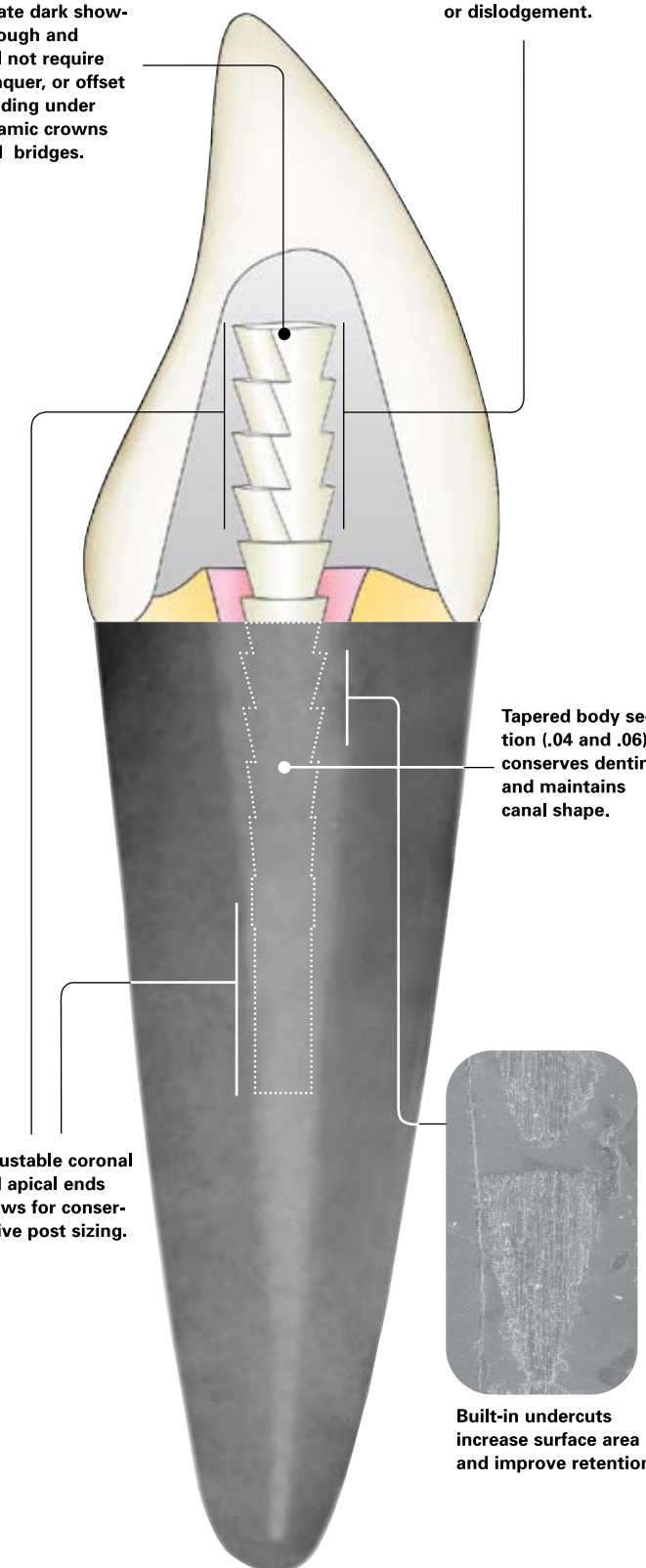
PART NO.	DESCRIPTION	PART NO. CANADA & EUROPE
977-1000	PeerlessPost Kit	977-1040
977-1001	Universal Drill	977-1041
977-1011	Drill #1 – .7 mm .06 taper ( 2 pk)	977-1042
977-1012	Drill #2 – .8 mm .06 taper ( 2 pk)	977-1043
977-1013	Drill #3 – .9 mm .04 taper ( 2 pk)	977-1044
977-1014	Drill #4 – 1.0 mm .04 taper ( 2 pk)	977-1045
977-1021	Post #1 – .7 mm .06 taper (10 pk)	977-1051
977-1022	Post #2 – .8 mm .06 taper (10 pk)	977-1052
977-1023	Post #3 – .9 mm .04 taper (10 pk)	977-1053
977-1024	Post #4 – 1.0 mm .04 taper (10 pk)	977-1054

# PeerlessPost™

PeerlessPosts are tooth colored. They will not create dark show-through and will not require opaquer, or offset shading under ceramic crowns and bridges.

Unique "keystone" retention head prevents rotation or dislodgement.

PeerlessPost is made from non-galvanic, noncorroding fiber-reinforced composite. It is radiopaque to easily distinguish it from tooth, gutta percha and cement.



Tapered body section (.04 and .06) conserves dentin and maintains canal shape.

Adjustable coronal and apical ends allows for conservative post sizing.

Built-in undercuts increase surface area and improve retention.

# I N D E X

PRODUCT	PAGE	PRODUCT	PAGE	PRODUCT	PAGE	PRODUCT	PAGE	PRODUCT	PAGE
4-Series Ultrasonic Tips	58	EndoRing	19	Lip Clip (Vitality Scanner 2006)	7	RealSeal SE	37, 42	Touch 'n Heat and Accessories	49
Absorbent Points	50	EndoTouch TC	20	Lubricant, SlickGel	19, 30	Reamers	26	Triple-Flex Files	25
Adapter, Stropko	31, 65	Engine Spreaders	53	M4 Safety Handpiece	21	RedStar Ultrasonic Tips	57	Tubli-Seal	51
Apex Locators	4, 6	Epiphany	43	MicroFlow Cartridges	52	Retractors	67	Tubli-Seal EWT	51
Autofit Backfill Gutta Percha	44	Explorers	7, 68	MicroFlow Syringe	52	Ruddle Curette	66	Tubli-Seal Xpress	51
Autofit Feathered Tip Gutta Percha (Nonstandard)	44	Files	10-17, 24-27	MicroSeal Condensers	53	Ruddle Mini Curette	66	Tubli-Seal EWT Xpress	51
Autofit Greater Taper Gutta Percha	44	File Adaptor	61	MicroSeal Gutta Percha	45, 53	Ruddle Post Removal System and Accessories	74	Tweezers	71
Axxess Handpieces	22	Finger Pluggers	50	MicroSeal Paper Points	45, 53	Safety Handpiece	21	TF (Twisted Files)	10, 11
Bending Tool	39	Finger Spreaders	50, 53	MicroSeal Spreaders	53	Scalpel Handle	64	TF (Twisted Files) Gutta Percha	45
Barbed Broaches	26	Forceps	71	MicroSurgical Pluggers	69	Scalpels	64	TF (Twisted Files) Sterile Paper Pts	31, 45
BK3 Ultrasonic Tips	60, 61	Gates Glidden	27	MicroSurgical Suction	64	Scissors	71	Ultrasonic Tips	57-61
BUC Ultrasonic Tips	59	Greater Taper Gutta Percha	44	Mini Apex Locator and accessories	6	Sealers	37, 42, 51	UT Ultrasonic Tips	60
Buchanan Condensers	69	Grounding Lead with Lip Clip (2006)	7	Mini Jaquette Curette	66	Silicone Boots	39	UT-4 Ultrasonic Tip	58, 61
Buchanan Hand Pluggers	46	Gutta Percha	44, 45, 48	Mini-Spring Head Handpiece	23	SlickGel ES	19, 30	Vitality Scanner 2006 and Accessories	7
Buchanan Heat Plugger Tip Stand	46	Gutta Percha – K3	14, 45	MiniEndo II	56	SJ Ultrasonic Tips	60	VT Ultrasonic Tip	59
Buchanan Heat Pluggers	46	Handpieces	20-23	Mirror Handle	67	SJ-4 Ultrasonic Tip	58		
Carr Explorer CX-1	7, 68	Hedstrom Files	25	Mirrors	67	SmearClear	30		
Carr Retractors	67	Impact Air Handpieces	68	Molt 2-4 Elevating Curette	66	Specialty Ultrasonic Tips	59		
Carr Sutures	70	Irrigator	31, 65	Needle Bending Tool	39	Spreader Ultrasonic Tips	57, 58, 61		
Carr-Kanter Back-Action Ultrasonic Tip	59	ISO/MicroSeal Gutta Percha	45, 53	Needle Holders	71	Spreaders	50, 53		
Castroviejo Needle Holder	71	ISO/MicroSeal Paper Points	45, 53	Nickel-Titanium Files	10-17	Spring-Head Handpieces	22, 23, 53		
CK Ultrasonic Tip	59	Jacquette Curette	66	Nickel-Titanium Irrigating Needle Tips	31	ST Ultrasonic Tip	59		
Condensers	69	K3 G-Packs	15	Nonstandard Feathered Tip Gutta Percha	44	Standardized Gutta Percha	48		
Contra-Angles	20, 53	K3 Gutta Percha	14, 45	Obtura and Accessories	52	Sterile Handfiles	27		
CPR Tips	59	K3 Procedure Packs	15	Paper Points	31, 45	Stropko Irrigator	31, 65		
CT Ultrasonic Tips	60, 61	K3 Nickel-Titanium Files	14	Pathfinder and Pathfinder CS	26	Sutures	70		
CT-4 Ultrasonic Tips	58, 61	K3 Nickel-Titanium Orifice Openers	14	Pathfinder and Pathfinder CS	26	System B Charge Adapter	47		
Curettes	66	K3 VTVT Packs	15	Planing Ultrasonic Tip	57	System B Heat Source	47		
Diamond-Coated Ultrasonic Tips	61	K3 Workstation	15	Plastic Practice Shaping Blocks	21	System B Heat Source Replacement Parts	47		
Double-Ended Pluggers	69	K-Files	25	Pluggers (MicroSurgical)	69	System B Plastic Practice Blocks	47		
Electric Endodontic Motors	21, 52	K-Flex Files	24	PeerlessPost	75	System B Pluggers	46		
Elements Apex Locator	4	KiS Tips	61	Post Removal System	74	System B Tip Stand	46		
Elements Diagnostic Unit	4	LA Axxess Burs and Instruments	18	Pulp Canal Sealer and Pulp Canal Sealer EWT	51	Tapered Gutta Percha	44		
Elements Obturation Unit	38	LA Axxess Kit	18	Quantec Nickel-Titanium Files	16, 17	TCM Endo III Foot Pedal	21		
Endo-Bender	19	Latch-Head Handpiece	22	RealSeal	40-42	TCM Endo III Motor	21, 52		
Endo-Bender Gauge	19			RealSeal 1	34-37	Tip Snip	44		
Endo Explorer DG-16	7, 68					Torque Limiting Handpiece	23		

### Registered Trademarks

- Autofit
- Endo-Bender
- Epiphany
- K-Flex
- MicroSeal
- Obtura
- Quantec
- M4 Safety Handpiece
- TF
- Triple-Flex

### Trademarks

- Apex Finder
- CT Tips
- Elements Obturation Unit
- EndoTouch
- Four Series
- K3
- LA Axxess
- Microflow
- Pacmac
- Pathfinder
- Pulp Canal Sealer
- RealSeal
- Ruddle Post Removal System
- SlickGel ES
- SJ Tips
- SmearClear
- Stropko Irrigator
- System B
- Tip Snip
- Touch 'n Heat
- Tubli-Seal Xpress
- Tubli-Seal EWT Xpress
- Vitality Scanner